

China:(Headquarters)
E-P EQUIPMENT CO.,LTD
NO.121 YongHua Street, Shi Qiao Road,
Xia Cheng Qu, Hangzhou, China
Tel:86-571-28035657/28035633
Fax:86-571-28035665
E-mail:info@ep-ep.com

USA:
E-P EQUIPMENT, USA CORP,1770 Campton Road
Inman, SC 29349
Tel:864-472-2776
Fax:1-864-472-2765
E-mail:info@ep-ep.com

Japan
E-P EQUIPMENT JAPAN
#1052-16-10 Hirao,Inagi-shi,Tokyo 206-0823 Japan
Tel:81-42-3506422
Fax:81-42-3506423
E-mail:ep-japan@ep-ep.com

Korea:
E-P EQUIPMENT KOREA
1058-Ra Dong, Buck Yi-Dong,Ilsan/Gu,koyang/Shi,
kyunggi/DU,Korea
Tel:82-31-9254100
Fax:82-31-9254102
E-mail:ep@ep-ep.co.kr



Electric forklift pioneer of china
One stop warehouse equipment manufacturer
Global intralogistics service provider



Introduction

The core values of EP are integration resources, demand fulfillment and Growing together. Over the decades, EP has played a key role in material handling and warehouse equipment industry of China.

Focus on the environment, the earth and our common home has always been EP's social commitment. EP will constantly develop new warehouse equipments to meet market demand through innovation and new technology.

Meeting market demand is what motivates EP. To meet various customer need, EP not only offers a full range of warehouse and material handling equipment, but also building a international technology service platform with a team of EP experts which provides professional service and values for customers.

Let's grow together!

Company positioning

Electric forklift pioneer of China
One stop warehouse equipment manufacturer
Global intralogistics service provider

Catalogue

Electric Pallet Truck


(DC)Pedestrian Electric Pallet Truck 1.5t EPT20-15ET	P02
(DC)Minimover Pedestrian Electric Pallet Truck 1.6t EPT-20-16M	P04
(DC)Pedestrian Electric Pallet Truck 2.0t EPT-20-20W	P06
(AC)Pedestrian Electric Pallet Truck 2.0t EPT20-20WA	P09
(AC)Pedestrian Electric Pallet Truck 2.0t EPT-20-20EWX	P13
(AC)Stand-on Pallet Truck 2.0t EPT20-20RA	P16
(AC)Stand-on Pallet Truck 2.0t EPT20-20EX	P19
(AC)Stand-on Electric Pallet Truck 2.5t EPT-20-25EX	P23
(AC)Stand-on Electric Pallet Truck 2.5t EPT-20-28EX	P25
(AC)Rider pallet truck 3-3.5t	P27

Electric Pallet Stacker

(DC)E-stacker 1.0t	P29
(AC)Bias Electric Stacker 1.0-1.2t ES10-10WA/ES12-12WA	P31
(AC)Electric Initial Lift 1.0-1.2t ES10-10Wai/ES12-12Wai	P34
(AC)Straddle Electric Stacker 1.0-1.2t ES10-22WA/ES12-25WA	P37
(AC)Stand-on Electric Stacker 1.4-1.6t ES14-14RA/ES16-16RA	P41
(AC)Forkover Electric Stacker 1.2t ES-12-12EX	P44
(AC)Forkover Electric Stacker 1.4-1.6t ES-14-14EX/ES-16-16EX/ES-16-16ETX	P47
(AC)Counterbalanced Electric Stacker 1.0t ES-10-10CX	P50



AC Power | EPT20-15ET
E-truck 1.5t

EP EQUIPMENT CO.,LTD.
www.ep-ep.com 

Features

Power

High quality assembly from the relative or the near industries makes strong power system and high steadiness in quality.

1. Strong power,easy work
Capacity 1.5ton,solving all problems in goods transit
Comparing to hand pallet truck,more efficient and convenient while lifting,lowering and walking
2. High quality assembly makes the truck durable solid body frame

Delicacy

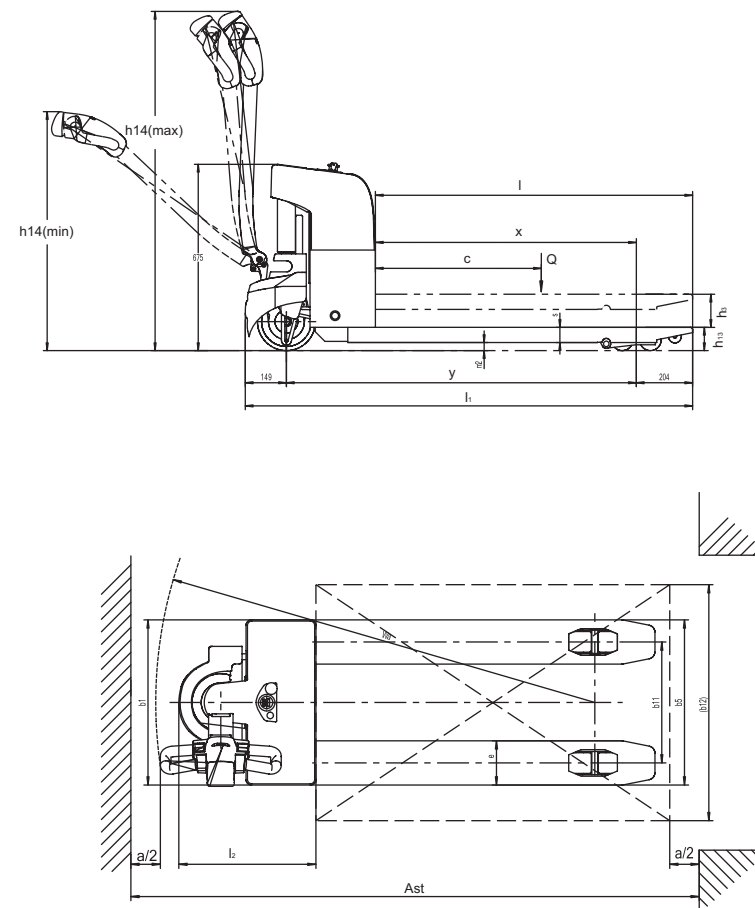
Reasonably removing unnecessary accessories to save materials and improve body frame intensity.

1. Pretty appearance
Semi-enclosed appearance design,brief and elegant
2. Delicacy structure with excellent detail
Delicacy inner and outer structure design with excellent details.
3. Easy to maintenance
Modular produce,easy to dismantle and assemble 60AH battery,free maintenance.

Mini

Ingenious designed,increase the space utilization

1. Small body to save space
Small size makes passing in narrow pathway easily
2. Agility and convenience in operation
Light body makes operation conveniently
3. Economic and energy saving
High quality with good price,origin design revolutionary truck in forklift industry
60AH battery,energy saving and environment protective



Pedestrian Electric Pallet Truck 1.5t

Characteristics			
1.1	Manufacturer		EP
1.2	Model designation		EPT20-15ET
1.3	Drive unit		Battery
1.4	Operator type		Walkie
1.5	Load capacity	Q (kg)	1500
1.6	Load center	c (mm)	600
1.8	Load distance (Raised/ Lowered)	x (mm)	883/946
1.9	Wheelbase	y (mm)	1250
Weights			
2.1	Service weight (Incl. battery)	kg	205
2.2	Axle loading, laden operator/load side	kg	500/1005
2.3	Axle loading, unladen operator/load side	kg	25/180
Wheels, Chassis			
3.1	Tyre type		PU/ PU
3.2	Tyre size, operator side		Φ210x70
3.3	Tyre size, load side		2xΦ85x60
3.5	Wheels, number operator/load side (x=drive wheels)		1x/ 4
3.7	Tread, load side	b ₁₁ (mm)	380
Dimensions			
4.4	Lift height	h ₃ (mm)	115
4.9	Height of tiller arm in operating position, min/ max	h ₁₄ (mm)	820/1170
4.15	Fork height, lowered	h ₁₃ (mm)	85
4.19	Overall length	l ₁ (mm)	1600
4.20	Length to face of forks	l ₂ (mm)	450
4.21	Overall width	b ₁ / b ₂ (mm)	560
4.22	Fork dimensions	s/ e/ l (mm)	55/ 150/ 1150
4.25	Fork spread, min/ max	b ₅ (mm)	560/685
4.32	Ground clearance, center of wheelbase	m ₂ (mm)	35
4.33	Aisle width, 1000×1200 pallet crossways	Ast (mm)	1779
4.34	Aisle width, 800×1200 pallet lengthways	Ast (mm)	1929
4.35	Outer turning radius	Wa (mm)	1475
Performance			
5.1	Travel speed, laden/ unladen	km/ h	3.5/ 4
5.2	Lifting speed, laden/ unladen	m/ s	0.051/ 0.060
5.3	Lowering speed, laden/ unladen	m/ s	0.052/ 0.059
5.8	Maximum gradeability, laden/ unladen, 5 min.	%	2/6
5.10	Service brake		Electromagnetic
Drive			
6.1	Drive motor rating $\frac{S}{60}$ min.	kW	0.65
6.2	Lift motor rating at $\frac{S}{15}$ %	kW	0.84
6.4	Battery voltage/ rated capacity (5h)	V/ Ah	24/ 60
6.5	Battery weight	kg	45
	Battery compartment dimensions l/ w/ h	mm	260/ 168/ 218
	Battery type		Maintenance free battery
Others			
8.1	Type of drive control		DC
	Manufacturer		CURTIS
8.4	Sound level at operator's ear	dB (A)	74

1. The specification in the table are for standard models only. For further information please contact us
2. Specification are subject to change without notice



EPT-20-13M
Minimover Pedestrian Electric
Pallet Truck 1.3t



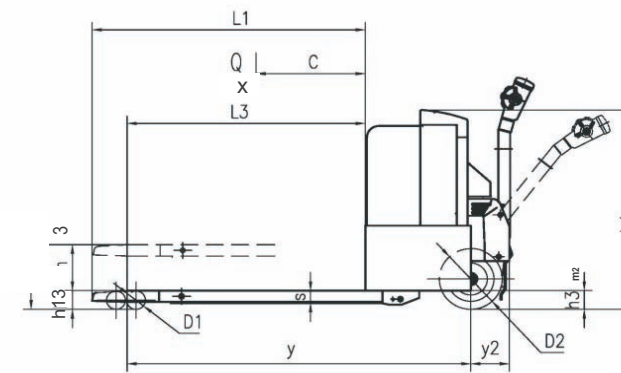
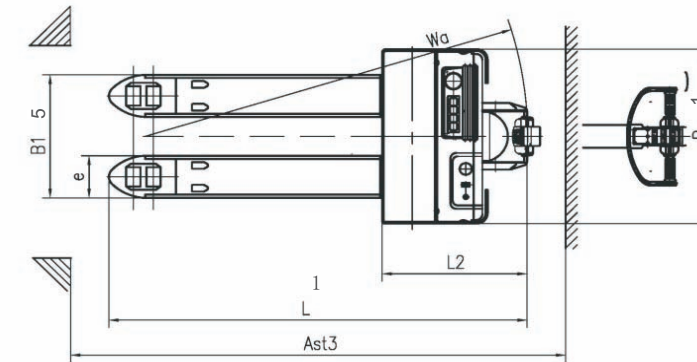
EP EQUIPMENT CO.,LTD.
www.ep-eq.com



Pedestrian Electric Pallet Truck 2.0t Specification

Characteristics			
1.1	Manufacturer	EP	
1.2	Model designation	EPT-20-20W	
1.3	Drive unit	Battery	
1.4	Operator type	Walkie	
1.5	Load capacity	Q (kg)	2000
1.6	Load center	c (mm)	600
1.8	Load distance (Raised/ Lowered)	x (mm)	874/ 965 894/ 985
1.9	Wheelbase	y (mm)	1454 1474
Weights			
2.1	Service weight (Incl. battery)	kg	610
2.2	Axle loading, laden operator/load side	kg	870/ 1740
2.3	Axle loading, unladen operator/load side	kg	458/ 152
Wheels, Chassis			
3.1	Tyre type	PU/ PU	
3.2	Tyre size, operator side	Φ266X126	
3.3	Tyre size, load side	Φ80x120, Φ80X80	
3.4	Balance wheels (dimensions)	Φ85x50	
3.5	Wheels, number operator/load side (x=drive wheels)	1x+ 2/ 4	
Dimensions			
4.4	Lift height	h ₃ (mm)	120
4.9	Height of tiller arm in operating position, min/ max	h ₁₄ (mm)	1280, 1190/ 770
4.15	Fork height, lowered	h ₁₃ (mm)	85
4.19	Overall length	l ₁ (mm)	1802 1852
4.20	Length to face of forks	l ₂ (mm)	780
4.21	Overall width	b ₁ / b ₂ (mm)	764
4.22	Fork dimensions	s/ e/ l (mm)	55/ 185/ 1150 55/ 185/ 1200
4.25	Fork spread, min/ max	b ₅ (mm)	540/ 685
4.32	Ground clearance, center of wheelbase	m ₂ (mm)	35
4.33	Aisle width, 1000×1200 pallet crossways	Ast (mm)	1912
4.34	Aisle width, 800×1200 pallet lengthways	Ast (mm)	2102
4.35	Outer turning radius	Wa (mm)	1667 1688
Performance			
5.1	Travel speed, laden/ unladen	km/ h	4.6/ 5.9
5.2	Lifting speed, laden/ unladen	m/ s	0.051/ 0.06
5.3	Lowering speed, laden/ unladen	m/ s	0.052/ 0.059
5.8	Maximum gradeability, laden/ unladen S ₂ 5 min.	%	5/ 7
5.10	Service brake		Mechanical
Drive			
6.1	Drive motor rating S ₂ 60 min.	kW	0.93
6.2	Lift motor rating at S ₃ 15%	kW	2.2
6.4	Battery voltage/ rated capacity (5h)	V/ Ah	24/ 210
6.5	Battery weight	kg	220
	Battery compartment dimensions l/ w/ h	mm	740x220x560
	Battery type		Industry battery
Others			
8.1	Type of drive control		DC
	Manufacturer		CURTIS
8.4	Sound level at operator's ear	dB (A)	70

1. The specification in the table are for standard models only. For further information please contact us
2. Specification are subject to change without notice




EPT-20-20W
Standard features
Emergency stop & Belly button
BDI and Hourmeter
Horn & Electrical brake
Casters to balance stability
Grease fitting
Industry battery
Battery cable and plug
Progressive speed DC control system
Electrical power steering system
Option
Load backrest
Handset
Load wheel dual/single
Fork width and length option (size)
Entry&Exit roller for empty pallets
Customized battery compartment
Special color
Battery connector and cable

Features

1. Durable and rigid frame and forks construction ensure the truck to handle heavy loads.
2. Tiller head ergonomically designed for maximum operator comfortable, and control buttons positioned to allow operation with either hand.
3. Adjustable truck working performance level by programmable unit.
4. Long life traction system. The traction unit is mounted centrally, special stronger gear box ensure long life of separately excited motor. Its external position ensures adequate ventilation.
5. Standard grease fitting on pivot points.
6. Entry and exit rollers ensure a fast, smooth handling operation.
7. Ergonomic tiller head and handle design ensure the operator's high vision to fork access to pallets, and operating handle freely and easily.
8. Battery tray with reinforced protection against collision and vibration.



AC Power | EPT20-20WA
Pedestrian Pallet Truck 2.0t

EP EQUIPMENT CO.,LTD.
www.ep-eq.com 

Performance & Reliability

1. The innovative AC system offers quick response, accurate control, impact structure, excellent performance, longer battery service life.
2. Advanced regenerative braking guarantee low-energy consumption, increasing the efficiency.
3. High-strength frame design, suitable for tough workplaces, ensures longer service life.
4. Excellent performance of getting in and out of empty pallet, greatly increases the operation efficiency.



Safety

1. Unique arc board designed on the front frame ensures the clearance between front and rear frames stay constant, avoid the accident of clipping finger.
2. Anti-roll back prevents uncontrolled traveled travel speed or roll-back on ramps when loading and unloading.
3. Emergency plug mounted at up-right side on truck frame, all power can be cut off by simply pulling emergency plug and the truck stops



Serviceability

1. Self-Diagnostics provided through the digital display allows easy trouble-shooting with the use of an external hand-held analyzer.
2. Hinged battery steel cover can be easily opened, enhance efficient to supply distilled water or electrolyte.
3. Vertical motor ensures convenience inspection and maintenance of motor and brake, provide much better maintainability than horizontal motor.





Pedestrian Pallet Truck 2.0t Specification

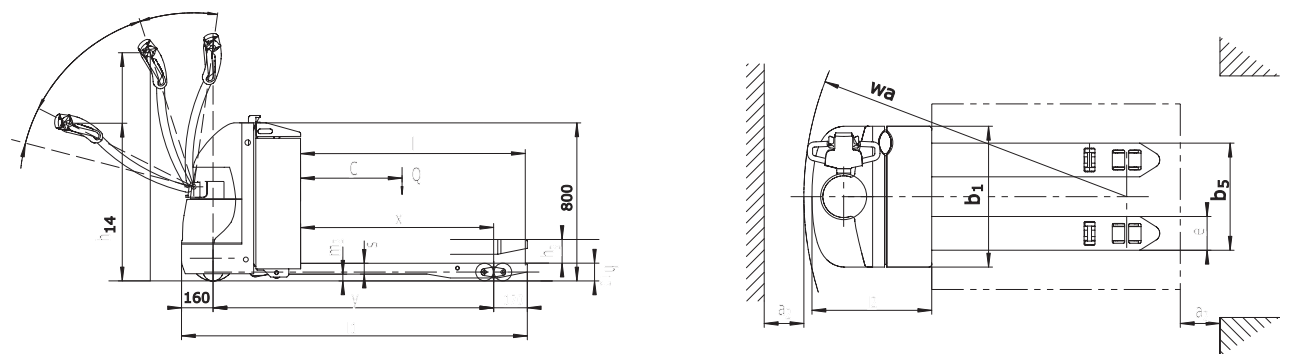
Characteristics			
1.1	Manufacturer	EP	
1.2	Model designation	EPT20-20WA	
1.3	Drive unit	Battery	
1.4	Operator type	Walkie	
1.5	Load capacity	Q (kg)	2000
1.6	Load center	c (mm)	600
1.8	Load distance (Raised/ Lowered)	x (mm)	916/ 982
1.9	Wheelbase	y (mm)	1418
			937/ 1003
			1438
Weights			
2.1	Service weight (Incl. battery)	kg	535
2.2	Axle loading, laden operator/load side	kg	955/ 1580
2.3	Axle loading, unladen operator/load side	kg	430/ 105
Wheels, Chassis			
3.1	Tyre type	PU/ PU	
3.2	Tyre size, operator side	Φ230x75	
3.3	Tyre size, load side	2x Φ85x70/ Φ85x115	
3.4	Balance wheels (dimensions)	Φ85x48	
3.5	Wheels, number operator/load side (x=drive wheels)	1x +2/ 2 or 4	
3.6	Tread, operator side	b ₁₀ (mm)	498
3.7	Tread, load side	b ₁₁ (mm)	370/ 515
Dimensions			
4.4	Lift height	h ₃ (mm)	125
4.9	Height of tiller arm in operating position, min/ max	h ₁₄ (mm)	825/ 1190
4.15	Fork height, lowered	h ₁₃ (mm)	85
4.19	Overall length	l ₁ (mm)	1748
4.20	Length to face of forks	l ₂ (mm)	598
4.21	Overall width	b ₁ / b ₂ (mm)	710
4.22	Fork dimensions	s/ e/ l (mm)	55x170x1150
4.25	Fork spread, min/ max	b ₅ (mm)	540/ 685
4.32	Ground clearance, center of wheelbase	m ₂ (mm)	35
4.33	Aisle width, 1000x1200 pallet crossways	Ast (mm)	2400
4.34	Aisle width, 800x1200 pallet lengthways	Ast (mm)	2300
4.35	Outer turning radius	Wa (mm)	1638
			1659
Performance			
5.1	Travel speed, laden/ unladen	km/ h	5/ 5.5
5.2	Lifting speed, laden/ unladen	m/ s	0.051/ 0.060
5.3	Lowering speed, laden/ unladen	m/ s	0.052/ 0.059
5.8	Maximum gradeability, laden/ unladen S ₂ 5 min.	%	8/ 16
5.10	Service brake	Electromagnetic	
Drive			
6.1	Drive motor rating S ₂ 60 min.	kW	1.1
6.2	Lift motor rating at S ₃ 15%	kW	0.84
6.4	Battery voltage/ rated capacity (5h)	V/ Ah	24/ 210
6.5	Battery weight	kg	205
	Battery compartment dimensions l/ w/ h	mm	650/ 540/ 200
	Battery type	Industry battery	
Others			
8.1	Type of drive control	AC	
	Manufacturer	ZAPI	
8.4	Sound level at operator's ear	dB (A)	74

Operability

1. The ergonomically designed handle ensures smooth and easy controls of all operation. All the operation of lifting and travelling, will be easily achieved by touching the button switches in the handle.
2. More than 180° tiller/handle rotation range, plus compact body, ensure small turning radius and excellent maneuverability.
3. Creep speed control enabled when tiller/handle in vertical position allows the operator to work more efficient in a confined space.




EPT20-20WA			
	Standard Features		Option
1	Emergency stop & Belly Button	1	Load backrest
2	BDI and Hourmeter	2	Cold storage harness
3	Horn & Electrical Brake	3	Fork width and length option (size)
4	Casters to balance stability	4	Two pallets fork
5	Grease fitting	5	Entry & Exist roller for empty pallets
6	Industrial battery	6	Charger
7	Battery cable and plug	7	Build in charger
8	Progressive speed AC control system	8	Maintenance free battery
9	Creep option (as standard)	9	Customized battery compartment
10	Ergonomics handle	10	Swing out battery tray
11	Vertical-lifting battery change (as standard)	11	Special colour



1. The specification in the table are for standard models only. For further information please contact us
2. Specification are subject to change without notice

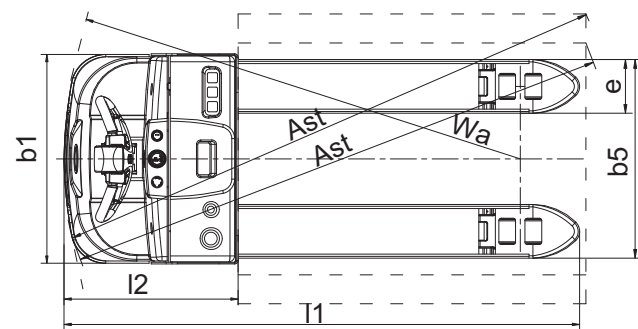
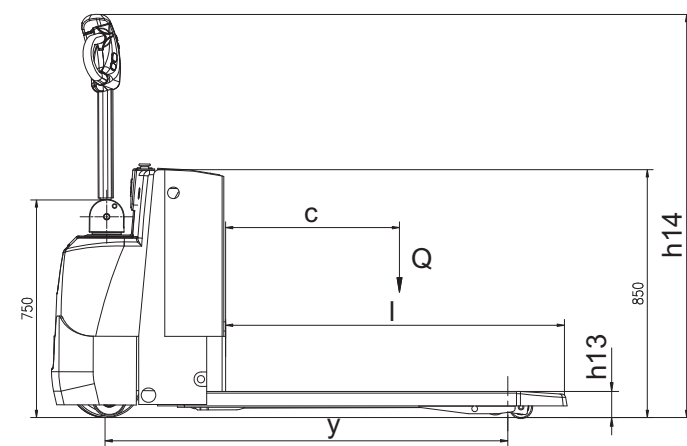


AC Power | EPT-20-20EWX
Pedestrian Electric Pallet
Truck 2.0t

EP EQUIPMENT CO.,LTD.
www.ep-ep.com 

Features

1. The Curtis AC electronic system guarantees low energy consumption and quiet operation of the pallet truck. The control system prevents current peaks thus protects the motors and the battery from premature wear.
2. AC motor special designed provides stronger power to keep high speed (8KM/H) with full load, and enhanced gradeability, make more efficient performance under high load capacity situation.
3. Advanced regenerative braking guarantee low-energy consumption, increasing the efficiency.
4. Anti-roll back available as standard to prevent uncontrolled traveled travel speed or roll-back on ramps when loading and unloading.
5. Easy-Touch emergency plug mounted at up-right side on truck frame help operator take immediate action for any emergent happens.
6. Self-Diagnostics provided through the digital display allow easy trouble-shooting with the use of an external hand-held analyzer.
7. Utilizing as many interchangeable parts as possible, much reduce maintenance cost.
8. Electric power steering system: Easy to operate, especially excellent performance on turning.



EPT-20-20EWX
Standard features
Emergency stop & Belly button
BDI and Hourmeter
Horn & Electrical brake
Casters to balance stability
Grease fitting
Industry battery
Battery cable and plug
Progressive speed DC control system
Electric power steering system
Option
Load backrest
Handset
Load wheel dual/single
Fork width and length option(size)
Entry & Exit roller for empty pallets
Ergonomics handle
Battery connector and cable


Pedestrian Electric Pallet Truck 2.0t Specification

Characteristics			
1.1	Manufacturer		EP
1.2	Model designation		EPT-20-20EWX
1.3	Drive unit		Battery
1.4	Operator type		Rider
1.5	Load capacity	Q (kg)	2000
1.6	Load center	c (mm)	600
1.9	Wheelbase	y (mm)	1375
Wheels, Chassis			
3.1	Tyre type		PU/ PU
3.2	Tyre size, operator side		Φ248X75
3.3	Tyre size, load side		Φ80x120 (single) , Φ80X80 (double)
3.4	Balance wheels (dimensions)		Φ115x55
3.5	Wheels, number operator/load side (x=drive wheels)		1x+ 2/ 2 or 4
Dimensions			
4.9	Height of tiller arm in operating position, min/ max	h ₁₄ (mm)	750/ 1385
4.15	Fork height, lowered	h ₁₃ (mm)	85
4.19	Overall length	l ₁ (mm)	1750
4.20	Length to face of forks	l ₂ (mm)	600
4.21	Overall width	b ₁ / b ₂ (mm)	725
4.22	Fork dimensions	s/ e/ l (mm)	55/ 185/ 1150 or 1200
4.25	Fork spread, min/ max	b ₅ (mm)	540 / 685
4.32	Ground clearance, center of wheelbase	m ₂ (mm)	35
4.33	Aisle width, 1000×1200 pallet crossways	Ast (mm)	1940
4.34	Aisle width, 800×1200 pallet lengthways	Ast (mm)	1900
4.35	Outer turning radius	Wa (mm)	1575
Performance			
5.1	Travel speed, laden/ unladen	km/ h	3.5/ 3.5
5.2	Lifting speed, laden/ unladen	m/ s	0.056/ 0.06
5.3	Lowering speed, laden/ unladen	m/ s	0.057/ 0.059
5.8	Maximum gradeability, laden/ unladen S ₂ 5 min.	%	5/ 7
5.10	Service brake		Electromagnetic
Drive			
6.1	Drive motor rating S ₂ 60 min.	kW	1.5
6.2	Lift motor rating at S ₃ 15%	kW	2
6.4	Battery voltage/ rated capacity (5h)	V/ Ah	24/ 210
6.5	Battery weight	kg	200
	Battery compartment dimensions l/ w/ h	mm	650/ 200/ 575
	Battery type		Industry battery
Others			
8.1	Type of drive control		AC
	Manufacturer		CURTIS
8.4	Sound level at operator's ear	dB (A)	75
8.6	Steering		Power steering

1. The specification in the table are for standard models only. For further information please contact us
2. Specification are subject to change without notice

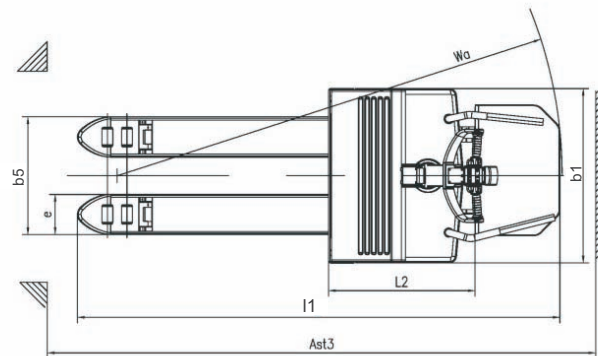
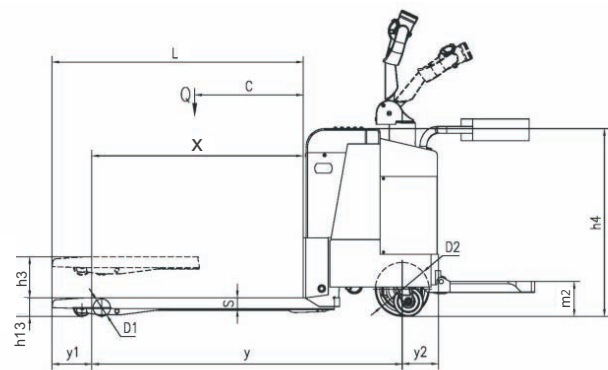


EPT-20-20EX
Stand-on Electric Pallet Truck 2.0t

EP EQUIPMENT CO.,LTD.
www.ep.com 

Features

1. The Curtis AC electronic system guarantees low energy consumption and quiet operation of the pallet truck. The control system prevents current peaks thus protects the motors and the battery from premature wear.
2. Closed side protection arms automatically set the speed at low speed mode, ensure safety for operator.
3. Ergonomics side protection arms design ensure the operator comfortable when working operation.
4. Entry and exit rollers ensure a fast, smooth handling operation; Single or Dual load wheel available (option).
5. Balance Caster wheel for added stability and maximum safety.
6. Ergonomical foldable stand-on platform design with comfortable pad materials.
7. Durable and rigid frame and forks construction ensure the truck to handle heavy loads.
8. Two strong side lifting cylinders with one extra central cylinder design ensure stable loading and unloading operations.
9. Electric power steering system: Easy to operate, especially excellent performance on turning.



Pedestrian Electric Pallet Truck 2.0t Specification

Characteristics			
1.1	Manufacturer		EP
1.2	Model designation		EPT-20-20EX
1.3	Drive unit		Battery
1.4	Operator type		Rider
1.5	Load capacity	Q (kg)	2000
1.6	Load center	c (mm)	600
1.8	Load distance (Raised/ Lowered)	x (mm)	885/ 972 905/ 992
1.9	Wheelbase	y (mm)	1430 1450
Weights			
2.1	Service weight (Incl. battery)	kg	750
2.2	Axle loading, laden operator/load side	kg	962/ 1788
2.3	Axle loading, unladen operator/load side	kg	563/ 187
Wheels, Chassis			
3.1	Tyre type		PU/ PU
3.2	Tyre size, operator side		Φ248X75
3.3	Tyre size, load side		Φ80x120, Φ80X80
3.4	Balance wheels (dimensions)		Φ138x60.5
3.5	Wheels, number operator/load side (x=drive wheels)		1x+ 2/2 or 4
Dimensions			
4.4	Lift height	h ₃ (mm)	120
4.9	Height of tiller arm in operating position, min/ max	h ₁₄ (mm)	1300(+180), 1200(+180)/940(+180)
4.15	Fork height, lowered	h ₁₃ (mm)	85
4.19	Overall length	l ₁ (mm)	1770/1820(+70folded)(+440unfolded)
4.20	Length to face of forks	l ₂ (mm)	620(+70folded)(+440unfolded)
4.21	Overall width	b ₁ / b ₂ (mm)	802
4.22	Fork dimensions	s/ e/ l (mm)	55/ 185/ 1150 55/ 185/ 1200
4.25	Fork spread, min/ max	b ₅ (mm)	540 / 685
4.32	Ground clearance, center of wheelbase	m ₂ (mm)	35
4.33	Aisle width, 1000x1200 pallet crossways	Ast (mm)	1912 (folded)
4.34	Aisle width, 800x1200 pallet lengthways	Ast (mm)	2102 (folded)
4.35	Outer turning radius	Wa (mm)	1684 (folded) 1705 (folded)
Performance			
5.1	Travel speed, laden/ unladen	km/ h	6/ 8
5.2	Lifting speed, laden/ unladen	m/ s	0.056/ 0.06
5.3	Lowering speed, laden/ unladen	m/ s	0.057/ 0.059
5.8	Maximum gradeability, laden/ unladen S ₂ 5 min.	%	5/ 7
5.10	Service brake		Electromagnetic
Drive			
6.1	Drive motor rating S ₂ 60 min.	kW	2.2
6.2	Lift motor rating at S ₃ 15%	kW	2
6.4	Battery voltage/ rated capacity (5h)	V/ Ah	24/ 210
6.5	Battery weight	kg	205
	Battery compartment dimensions l/ w/ h	mm	610x280x470
	Battery type		Industry battery
Others			
8.1	Type of drive control		AC
	Manufacturer		CURTIS
8.4	Sound level at operator's ear	dB (A)	70
8.6	Steering		Power steering

1. The specification in the table are for standard models only. For further information please contact us
2. Specification are subject to change without notice



AC Power | EPT20-20RA
Stand-on Pallet Truck 2.0t

EP EQUIPMENT CO.,LTD.
www.ep-ep.com

Performance & Reliability

1. The innovative AC system offers quick response, accurate control, impact structure, excellent performance, longer battery service life.
2. AC motor special designed provides stronger power to keep high speed (8KM/H) with full load, and enhanced gradeability, make more efficient performance under high load capacity situation.
3. Advanced regenerative braking guarantee low-energy consumption, increasing the efficiency.
4. Dual robust lifting cylinders, connecting the right and left of truck frame with a synchronous con-rod, ensures stably lifting and falling even under unbalance loading.
5. The unique suspension Driving Floating Adjustable system (DFA) design, ensures the truck less vibration, stable, no tilt while turning in high speed, guarantees the accurate operator's operating handle freely and easily with full load, and could adjust operating force of handle to ease operator according to various workplace.



Safety

1. Unique arc board designed on the front frame ensures the clearance between front and rear frames stay constant, avoid the accident of clipping finger.
2. High speed (8.0Km/h) design of EPT-20-20RA with guard arm open and stand-on platform in a working position enable the operator to work more efficient in a ride-on mode; Normal speed (4Km/h) is available when guard arm closed and stand-on platform at folded position in walkie mode.
3. Anti-roll back available as standard to prevent uncontrolled traveled travel speed or roll-back on ramps when loading and unloading.
4. Easy-Touch emergency plug mounted at up-right side on truck frame help operator take immediate action for any emergent happens.





Serviceability

1. One-piece lightweight service access top cover conveniently bolt on and off for easy access to all major and key components, reducing service time when inspection.
2. Self-Diagnostics provided through the digital display allow easy trouble-shooting with the use of an external hand-held analyzer.
3. Utilizing as many interchangeable parts as possible, much reduce maintenance cost.

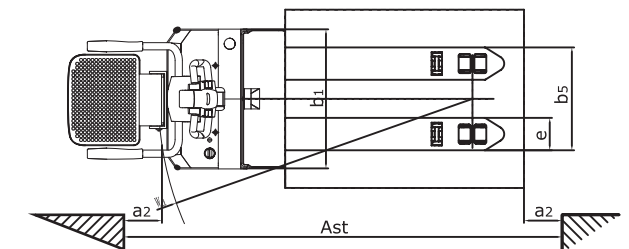
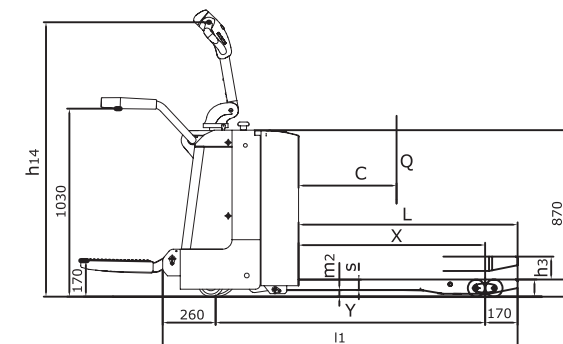


EPT20-20RA			
	Standard Features		Option
1	Emergency stop & Belly Button	1	Load backrest
2	BDI and Hourmeter	2	Cold storage harness
3	Horn & Electrical Brake	3	Fork width and length option (size)
4	Casters to balance stability	4	Two pallets fork
5	Grease fitting	5	Entry & Exist roller for empty pallets
6	Industrial battery	6	Charger
7	Battery cable and plug	7	Customized battery compartment
8	Progressive speed AC control system	8	Special colour
9	Creep option (as standard)		
10	Ergonomics handle		
11	Vertical-lifting battery change (as standard)		
12	Ergonomics handle		
13	Vertical-lifting battery change (as standard)		

Stand-on Electric Pallet Truck 2.0t Specification


Characteristics			
1.1	Manufacturer		EP
1.2	Model designation		EPT20-20RA
1.3	Drive unit		Battery
1.4	Operator type		Rider stand
1.5	Load capacity	Q (kg)	2000
1.6	Load center	c (mm)	600
1.8	Load distance (Raised/ Lowered)	x (mm)	916/ 982 937/ 1003
1.9	Wheelbase	y (mm)	1420 1440
Weights			
2.1	Service weight (Incl. battery)	kg	670
2.2	Axle loading, laden operator/load side	kg	1066/ 1604
2.3	Axle loading, unladen operator/load side	kg	546/ 124
Wheels, Chassis			
3.1	Tyre type		PU/ PU
3.2	Tyre size, operator side		Φ230x75
3.3	Tyre size, load side		2x Φ85x70
3.4	Balance wheels (dimensions)		Φ130x60
3.5	Wheels, number operator/load side (x=drive wheels)		1x+ 2/ 2 or 4
3.6	Tread, Operator side	b ₁₀ (mm)	510
3.7	Tread, Load side	b ₁₁ (mm)	370/ 515
Dimensions			
4.4	Lift height	h ₃ (mm)	125
4.9	Height of tiller arm in operating position, min/ max	h ₁₄ (mm)	1150/ 1470
4.15	Fork height, lowered	h ₁₃ (mm)	85
4.19	Overall length	l ₁ (mm)	1860 1930
4.20	Length to face of forks	l ₂ (mm)	710
4.21	Overall width	b ₄ / b ₂ (mm)	730
4.22	Fork dimensions	s/ e/ l (mm)	55x170x1150 55x170x1220
4.25	Fork spread, min/ max	b ₅ (mm)	540/ 685
4.32	Ground clearance, center of wheelbase	m ₂ (mm)	35
4.33	Aisle width, 1000×1200 pallet crossways	Ast (mm)	2034
4.34	Aisle width, 800×1200 pallet lengthways	Ast (mm)	2084
4.35	Outer turning radius	Wa (mm)	1700 1725
Performance			
5.1	Travel speed, laden/ unladen	km/ h	7.5/ 8.5
5.2	Lifting speed, laden/ unladen	m/ s	0.056/ 0.060
5.3	Lowering speed, laden/ unladen	m/ s	0.057/ 0.057
5.8	Maximum gradeability, laden/ unladen S ₂ 5 min.	%	8/ 16
5.10	Service brake		Electromagnetic
Drive			
6.1	Drive motor rating S ₂ 60 min.	kW	1.5
6.2	Lift motor rating at S ₃ 15%	kW	2.2
6.4	Battery voltage/ rated capacity (5h)	V/ Ah	24/ 210
6.5	Battery weight	kg	190
	Battery compartment dimensions l/ w/ h	mm	/
	Battery type		Industry battery
Others			
8.1	Type of drive control		AC
	Manufacturer		ZAPI
8.4	Sound level at operator's ear	dB (A)	74

1. The specification in the table are for standard models only. For further information please contact us
2. Specification are subject to change without notice





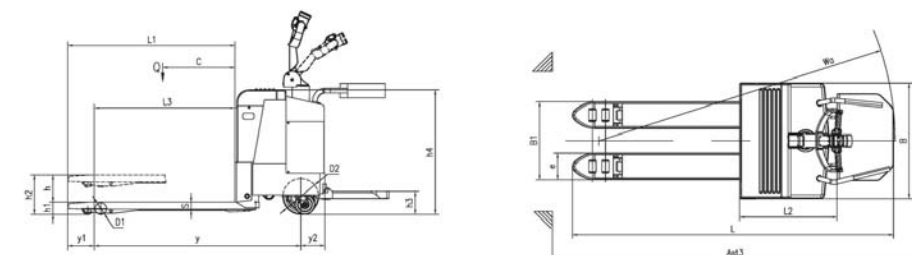
EPT-20-25EX
Stand-on Electric Pallet Truck 2.5t

EP EQUIPMENT CO.,LTD.
www.ep-ep.com 

Stand-on Electric Pallet Truck 2.5t

Characteristics			
1.1	Manufacturer		EP
1.2	Model designation		EPT-20-25EX
1.3	Drive unit		Battery
1.4	Operator type		Rider
1.5	Load capacity	Q (kg)	2500
1.6	Load center	c (mm)	600
1.9	Wheelbase	y (mm)	1493
Weights			
2.1	Service weight (Incl. battery)	kg	854
Wheels, Chassis			
3.1	Tyre type		PU/ PU
3.2	Tyre size, operator side		Φ248X75
3.3	Tyre size, load side		Φ80x120, Φ80X80
3.4	Balance wheels (dimensions)		Φ138x60.5
3.5	Wheels, number operator/load side (x=drive wheels)		1x+ 2/2 or 4
Dimensions			
4.4	Lift height	h ₃ (mm)	205
4.9	Height of tiller arm in operating position, min/ max	h ₁₄ (mm)	1455
4.15	Fork height, lowered	h ₁₃ (mm)	85
4.19	Overall length	l ₁ (mm)	2335
4.20	Length to face of forks	l ₂ (mm)	770 (+70folded)(+440unfolded)
4.21	Overall width	b ₁ / b ₂ (mm)	725
4.22	Fork dimensions	s/ e/ l (mm)	55/ 185/ 1150
4.25	Fork spread, min/ max	b ₅ (mm)	550
4.32	Ground clearance, center of wheelbase	m ₂ (mm)	35
4.33	Aisle width, 1000×1200 pallet crossways	Ast (mm)	---
4.34	Aisle width, 800×1200 pallet lengthways	Ast (mm)	---
4.35	Outer turning radius	Wa (mm)	1746
Performance			
5.1	Travel speed, laden/ unladen	km/ h	4.5/ 5
5.2	Lifting speed, laden/ unladen	m/ s	0.056/ 0.06
5.3	Lowering speed, laden/ unladen	m/ s	0.057/ 0.059
5.8	Maximum gradeability, laden/ unladen S ₂₅ min.	%	5/ 7
5.10	Service brake		Electromagnetic
Drive			
6.1	Drive motor rating § 60 min.	kW	1.5
6.2	Lift motor rating at § 15%	kW	2
6.4	Battery voltage/ rated capacity (5h)	V/ Ah	24/ 270
6.5	Battery weight	kg	212/252
	Battery type		Industry battery
Others			
8.1	Type of drive control		AC
	Manufacturer		CURTIS
8.4	Sound level at operator's ear	dB (A)	70
8.6	Steering		Power steering

1. The specification in the table are for standard models only. For further information please contact us
2. Specification are subject to change without notice





EPT-20-28EX
Stand-on Electric Pallet Truck 2.5t

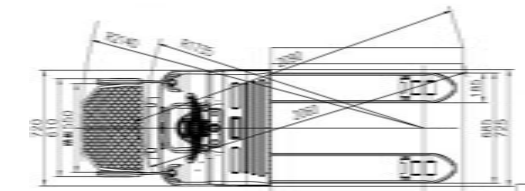
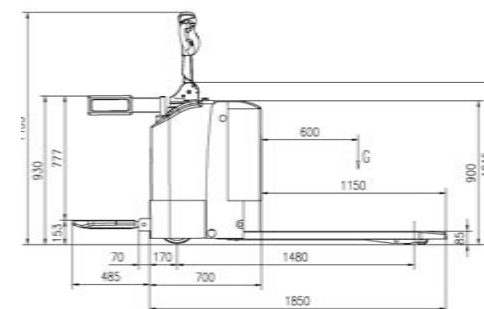
EP EQUIPMENT CO.,LTD.
www.ep-ep.com



Stand-on Electric Pallet Truck 2.5t

Characteristics			
1.1	Manufacturer		EP
1.2	Model designation		EPT-20-28EX
1.3	Drive unit		Battery
1.4	Operator type		Rider
1.5	Load capacity	Q (kg)	2500
1.6	Load center	c (mm)	600
1.9	Wheelbase	y (mm)	1480
Weights			
2.1	Service weight (Incl. battery)	kg	780
Wheels, Chassis			
3.1	Tyre type		PU/ PU
3.2	Tyre size, operator side		Φ248X75
3.3	Tyre size, load side		Φ80x120 (single), Φ80X80 (double)
3.4	Balance wheels (dimensions)		Φ115x55
3.5	Wheels, number operator/load side (x=drive wheels)		1x+ 2/ 4
Dimensions			
4.4	Lift height	h ₃ (mm)	195
4.9	Height of tiller arm in operating position, min/ max	h ₁₄ (mm)	1385
4.15	Fork height, lowered	h ₁₃ (mm)	85
4.19	Overall length	l ₁ (mm)	1750
4.20	Length to face of forks	l ₂ (mm)	770 (+70folded)(+440unfolded)
4.21	Overall width	b ₁ / b ₂ (mm)	720
4.22	Fork dimensions	s/ e/ l (mm)	55/ 185/ 1150
4.25	Fork spread, min/ max	b ₅ (mm)	540
4.32	Ground clearance, center of wheelbase	m ₂ (mm)	30
4.33	Aisle width, 1000×1200 pallet crossways	Ast (mm)	—
4.34	Aisle width, 800×1200 pallet lengthways	Ast (mm)	—
4.35	Outer turning radius	Wa (mm)	1735
Performance			
5.1	Travel speed, laden/ unladen	km/ h	4.5/ 5
5.2	Lifting speed, laden/ unladen	m/ s	0.056/ 0.06
5.3	Lowering speed, laden/ unladen	m/ s	0.057/ 0.059
5.8	Maximum gradeability, laden/ unladen, § min.	%	5/ 7
5.10	Service brake		Electromagnetic
Drive			
6.1	Drive motor rating § 60 min.	kW	1.5
6.2	Lift motor rating at § 15%	kW	2
6.4	Battery voltage/ rated capacity (5h)	V/ Ah	24/ 280
6.5	Battery weight	kg	270/310
	Battery type		Industry battery
Others			
8.1	Type of drive control		AC
	Manufacturer		CURTIS
8.4	Sound level at operator's ear	dB (A)	70
8.6	Steering		Power steering

1. The specification in the table are for standard models only. For further information please contact us
2. Specification are subject to change without notice





EPT20-30RT(EPT20-35RT)
Rider pallet truck 3-3.5t

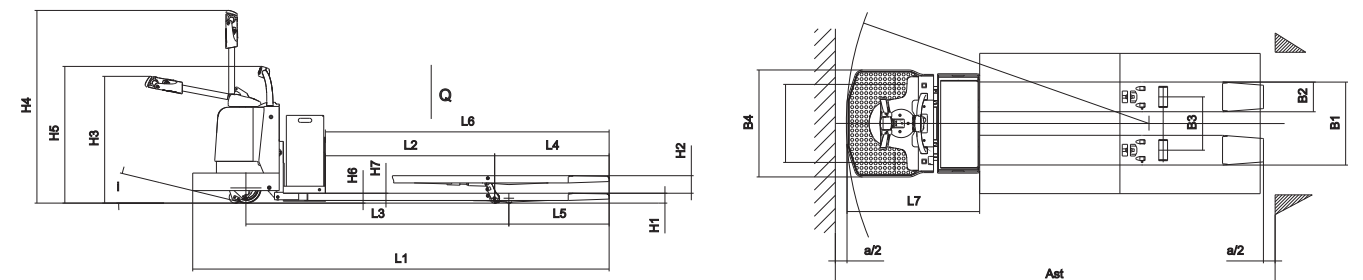
EP EQUIPMENT CO.,LTD.
www.ep-ep.com



Rider pallet truck 3-3.5t


Characteristics				
1.1	Manufacturer		EP	EP
1.2	Model designation		EPT20-30RT	EPT20-35RT
1.3	Drive unit		Battery	Battery
1.4	Operator type		Rider	Rider
1.5	Load capacity	Q (kg)	2700	3600
1.6	Load center	c (mm)	600	600
1.8	Load distance (Raised/ Lowered)	x (mm)	920	1450
1.9	Wheelbase	y (mm)	1722	2250
Weights				
2.1				
Wheels, Chassis				
3.1	Tyre type		PU/ PU	PU/ PU
3.2	Tyre size, operator side		Φ254X95	Φ254X95
3.3	Tyre size, load side		Φ82.5X165	Φ82.5X165
3.4	Balance wheels (dimensions)		Φ100X63.5	Φ100X63.5
3.5	Wheels, number operator/load side (x=drive wheels)		1/2/2	1/2/2
3.6	Tread, operator side	b ₁₀ (mm)	668	668
3.7	Tread, load side	b (mm)	456	456
Dimensions				
4.4	Lift height	h ₃ (mm)	140	140
4.9	Height of tiller arm in operating position, min/ max	h ₁₄ (mm)	1117/1646	1117/1646
4.15	Fork height, lowered	h ₁₃ (mm)	82.5	82.5
4.19	Overall length	l ₁ (mm)	2355	3563
4.20	Length to face of forks	l ₂ (mm)	1135	1135
4.21	Overall width	b ₁ / b ₂ (mm)	915	915
4.22	Fork dimensions	s/ e/ l (mm)	60/230/1190	60/254/2428
4.25	Fork spread, min/ max	b ₅ (mm)	686	710
4.33	Aisle width, 1000×1200 pallet crossways	Ast (mm)	2555	3763
4.35	Outer turning radius	Wa (mm)	2064	2589
Performance				
5.1	Travel speed, laden/ unladen	km/ h	10.5/14.5	10.5/14.5
5.2	Lifting speed, laden/ unladen	m/ s	30/33	28/33
5.3	Lowering speed, laden/ unladen	m/ s	40/38	42/38
5.8	Maximum gradeability, laden/ unladen S ₂ 5 min.	%	8/15	6/15
5.10	Service brake		Electromagnetic	Electromagnetic
Drive				
6.1	Drive motor rating S ₂ 60 min.	kW	4	4
6.2	Lift motor rating at S ₃ 15%	kW	2.2	2.2
6.4	Battery voltage/ rated capacity (5h)	V/ Ah	24/360	24/360
Others				
8.1	Type of drive control		AC	AC
	Manufacturer		CURTIS	CURTIS
8.4	Sound level at operator's ear	dB (A)	70	70

1. The specification in the table are for standard models only. For further information please contact us
2. Specification are subject to change without notice



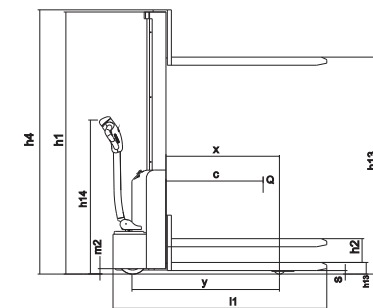
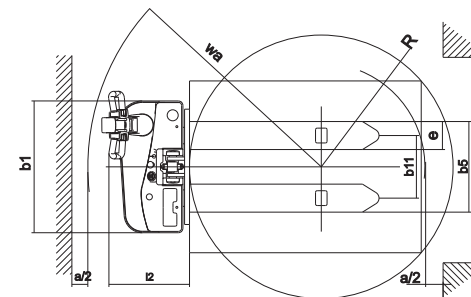


DC Power | ES10-10M(ES10-10ES)
E-stacker 1.0t

EP EQUIPMENT CO.,LTD.
www.ep-ep.com 


E-stacker 1.0t

Characteristics			
1.1	Manufacturer		EP
1.2	Model designation		ES10-10ES (1600mm) ES10-10ES (2000mm)
1.3	Drive unit		electric
1.4	Operator type		pedestrian
1.5	Load capacity	Q (kg)	1000
1.6	Load center	c (mm)	600
1.8	Load distance	x (mm)	800
1.9	Wheelbase	y (mm)	1086
Weights			
2.1	Service weight (Incl. battery)	kg	550
2.2	Axle loading, laden operator/load side	kg	550/1000
2.3	Axle loading, unladen operator/load side	kg	400/150
Wheels, Chassis			
3.1	Tyre type		PU/ PU
3.2	Tyre size, operator side	mm	Φ210x70
3.3	Tyre size, load side	mm	Φ85x70
3.4	Balance wheels (dimensions)		Φ130x60
3.5	Wheels, number operator/load side (x=drive wheels)		1x+ 2/ 4
3.6	Tread, operator side	b ₁₀ (mm)	543
3.7	Tread, load side	b ₁₁ (mm)	380
Dimensions			
4.2	Height, mast lowered	h ₁ (mm)	1940
4.3	Free lift	h ₂ (mm)	1520
4.4	Lift height	h ₃ (mm)	1605
4.5	Height, mast extended	h ₄ (mm)	1976
4.9	Height of tiller arm in operating position, min/ max	h ₁₄ (mm)	932/ 1164
4.15	Fork height, lowered	h ₁₃ (mm)	85
4.19	Overall length	l ₁ (mm)	1581
4.20	Length to face of forks	l ₂ (mm)	431
4.21	Overall width	b ₁ / b ₂ (mm)	800
4.22	Fork dimensions	s/ e/ l (mm)	60/ 190/ 1150
4.25	Outside fork width, minimum/ maximum	b ₅ (mm)	570
4.32	Ground clearance	m ₂ (mm)	30
4.33	Aisle width, 1000×1200 pallet crossways	Ast (mm)	2098
4.34	Aisle width, 800×1200 pallet lengthways	Ast (mm)	2031
4.35	Outer turning radius	Wa (mm)	1326
Performance			
5.1	Travel speed, laden/ unladen	km/ h	4.2/5
5.2	Lifting speed, laden/ unladen	m/ s	0.10/ 0.14
5.3	Lowering speed, laden/ unladen	m/ s	0.16/ 0.11
5.8	Maximum gradeability, laden/ unladen, ≤5 min.	%	5/ 10
5.10	Service brake		Electromagnetic
Drive			
6.1	Drive motor rating § 60 min.	kW	0.5
6.2	Lift motor rating at § 15%	kW	1.5
6.4	Battery voltage/ rated capacity (5h)	V/ Ah	2x12/70
6.5	Battery weight (with box)	kg	2x25
	Battery compartment dimensions l/ w/ h	mm	260/ 172/ 215
	Battery type		Gel Battery
Others			
8.1	Type of drive control		DC
	Manufacturer		CURTIS
8.4	Sound level at operator's ear	dB (A)	74





AC Power | ES10-10WA/ES12-12WA
Bias Electric Stacker 1.0-1.2t

EP EQUIPMENT CO.,LTD.
www.ep-ep.com 

Performance & Reliability

1. The innovative AC system offers quick response, accurate control, impact structure, excellent performance, longer battery service life.
2. The innovative AC motor provides stronger power to keep high speed with full load. 8% gradeability, provides increased power to climb docks and floor joints without lurching or stalling.
3. World-class hydraulic power pack, with low noise, few vibration and excellent leak tightness, automatically adjusts the rate of decline whether loaded or unloaded, and ensures smooth lifting.



Operability

1. The ergonomically designed handle ensures smooth and easy controls of all operation. All the operation of lifting and travelling, will be easily achieved by touching the button switches in the handle.
2. Operating handle is on the side, allowing operators to work with greater vision.
3. Sideway battery design for easy battery replacement.



Safety

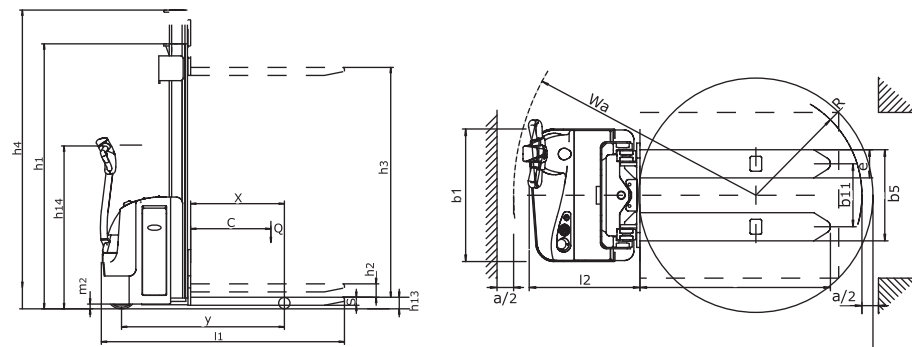
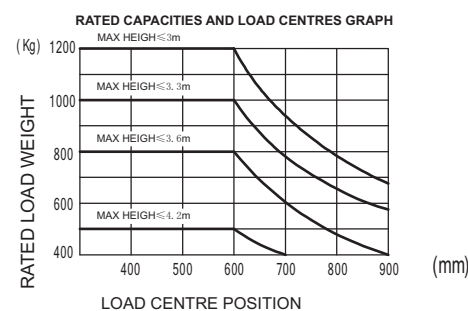
1. Explosion-proof valve installed under lifting cylinder, prevent the mast go down quickly if the oil pipe broken.
2. Anti-roll back available as standard to prevent uncontrolled traveled travel speed or roll-back on ramps when loading and unloading.
3. Easy-Touch emergency plug mounted at up-right side on truck frame help operator take immediate action for any emergent happens.
4. The truck switches to low speed mode automatically when lifting higher than 0.5m, more secure.



Bias Electric Stacker 1.0-1.2t Specification

Characteristics			
1.1	Manufacturer		EP
1.2	Model designation		ES10-10WA ES12-12WA
1.3	Drive unit		Battery
1.4	Operator type		Walkie
1.5	Load capacity	Q (kg)	1000 1200
1.6	Load center	c (mm)	600 600
1.8	Load distance	x (mm)	700 700
1.9	Wheelbase	y (mm)	1218 1218
Weights			
2.1	Service weight (Incl. battery)	kg	850 1050
2.2	Axle loading, laden operator/load side	kg	750/ 1500 750/ 1500
2.3	Axle loading, unladen operator/load side	kg	715/ 335 715/ 335
Wheels, Chassis			
3.1	Tyre type		PU/ PU PU/ PU
3.2	Tyre size, operator side (diameter × width)	mm	230× 75 230× 75
3.3	Tyre size, load side (diameter × width)	mm	85× 70 85× 70
3.4	Balance wheels (dimensions)		85× 50 85× 50
3.5	Wheels, number operator/load side (x=drive wheels)		1x+ 1/ 2 1x+ 1/ 2
3.6	Tread, operator side	b ₁₀ (mm)	538 538
3.7	Tread, load side	b ₁₁ (mm)	380 380
Dimensions			
4.2	Height, mast lowered	h ₁ (mm)	1970 1970
4.3	Free lift	h ₂ (mm)	100 100
4.4	Lift height	h ₃ (mm)	3000 3000
4.5	Height, mast extended	h ₄ (mm)	3529 3529
4.9	Height of tiller arm in operating position, min/ max	h ₁₄ (mm)	825/ 1225 825/ 1225
4.15	Fork height, lowered	h ₁₃ (mm)	85 85
4.19	Overall length	l ₁ (mm)	1826 1826
4.20	Length to face of forks	l ₂ (mm)	676 676
4.21	Overall width	b ₁ / b ₂ (mm)	800 800
4.22	Fork dimensions	s/ e/ l (mm)	60/ 170/ 1150 60/ 170/ 1150
4.25	Outside fork width, minimum/ maximum	b ₅ (mm)	550 550
4.32	Ground clearance	m ₂ (mm)	30 30
4.33	Aisle width, 1000×1200 pallet crossways	Ast (mm)	2370 2370
4.34	Aisle width, 800×1200 pallet lengthways	Ast (mm)	2303 2303
4.35	Outer turning radius	Wa (mm)	1463 1463
Performance			
5.1	Travel speed, laden/ unladen	km/ h	5/ 5.5 5/ 5.5
5.2	Lifting speed, laden/ unladen	m/ s	0.127/ 0.15 0.127/ 0.15
5.3	Lowering speed, laden/ unladen	m/ s	0.23/ 0.22 0.23/ 0.22
5.8	Maximum gradeability, laden/ unladen S ₂ 5 min.	%	8/ 16 8/ 16
5.10	Service brake		Electromagnetic Electromagnetic
Drive			
6.1	Drive motor rating S ₂ 60 min.	kW	1.1 1.1
6.2	Lift motor rating at S ₃ 15%	kW	2.2 2.2
6.4	Battery voltage/ rated capacity (5h)	V/ Ah	24/ 160 24/ 210
6.5	Battery weight (with box)	kg	205 205
	Battery compartment dimensions l/ w/ h	mm	650/ 540/ 200 650/ 540/ 200
	Battery type		Industry battery Industry battery
Others			
8.1	Type of drive control		AC AC
	Manufacturer		ZAPI ZAPI
8.4	Sound level at operator's ear	dB (A)	74 74

1. Special lifting height available
2. The specification in the table are for standard models only. For further information please contact us
3. Specification are subject to change without notice

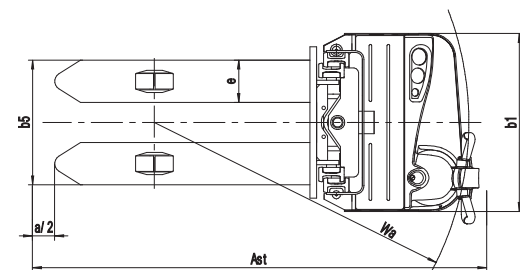
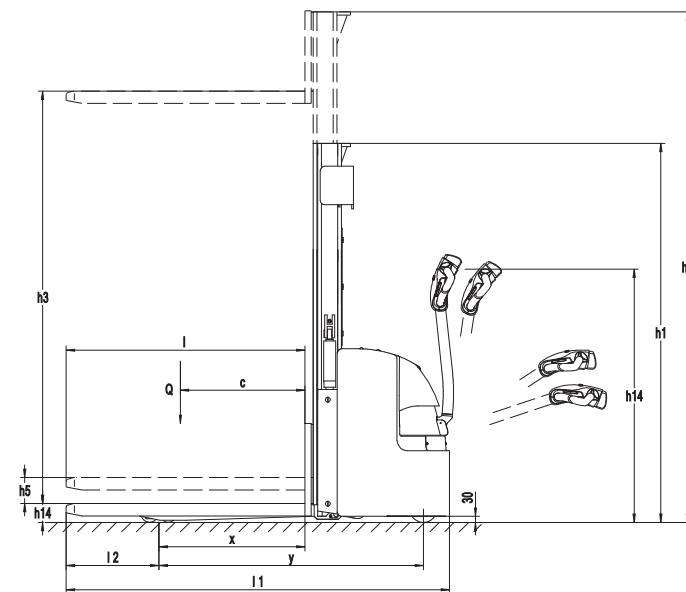


DC Power | ES10-10Wai/ES12-12Wai
Electric Initial Lift 1.0-1.2t

EP EQUIPMENT CO.,LTD
www.ep-ep.com

Features

1. The innovative AC system offers quick response, accurate control, impact structure, excellent performance, longer battery service life.
2. World-class hydraulic power pack, with low noise, few vibration and excellent leak tightness, automatically adjusts the rate of decline whether loaded or unloaded, and ensures smooth lifting.
3. The latest AC controller, high reliability, with regenerated braking, anti-roll back and adjustable settings, ensures the best performance in the different states.
4. American AMP connectors with top quality, prevents moisture and contaminants from interrupting truck operation in all environments, plus all the wires and cables reliably protected and fixed, greatly reduces the electrical error.
5. Sideway battery design for easy battery replacement.
6. Explosion-proof valve installed under lifting cylinder, prevent the mast go down quickly if the oil pipe broken.
7. Anti-roll back available as standard to prevent uncontrolled traveled travel speed or roll-back on ramps when loading and unloading.
8. Easy-Touch emergency plug mounted at up-right side on truck frame help operator take immediate action for any emergent happens.
9. The truck switches to low speed mode automatically when lifting higher than 0.5m, more secure.
10. The truck can handling two pallets one time, shorten the working hours and improve the efficiency greatly.



Electric Initial Lift 1.0-1.2t Sepecification

Characteristics			
1.1	Manufacturer		EP
1.2	Model designation		ES10-10Wai ES12-12Wai
1.3	Drive unit		Battery
1.4	Operator type		Pedestrian
1.5	Load capacity	Q (kg)	1000 1200
1.6	Load center	c (mm)	600
1.8	Load distance	x (mm)	701
1.9	Wheelbase	y (mm)	1275
Weights			
2.1	Service weight (incl. battery)	kg	990 1050
2.2	Axle loading, laden operator/load side	kg	730/ 1260 775/ 1475
2.3	Axle loading, unladen operator/load side	kg	680/ 310 715/ 335
Wheels, Chassis			
3.1	Tyre type		PU/ PU
3.2	Tyre size, operator side (diameter × width)	mm	Φ230x70
3.3	Tyre size, load side (diameter × width)	mm	Φ85x70
3.4	Balance wheels (dimensions)		Φ130x55
3.5	Wheels, number operator/load side (x=drive wheels)		1x+ 1/ 4 1x+ 1/ 4
3.6	Tread, operator side	b ₁₀ (mm)	538
3.7	Tread, load side	b ₁₁ (mm)	370
Dimensions			
4.2	Height, mast lowered	h ₁ (mm)	1302
4.3	Free lift	h ₂ (mm)	100
4.4	Lift height	h ₃ (mm)	1600
4.5	Height, mast extended	h ₄ (mm)	2076
4.6	Initial lift	h ₅ (mm)	125
4.9	Height of tiller arm in operating position, min/ max	h ₁₄ (mm)	825/ 1225
4.15	Fork height, lowered	h ₁₃ (mm)	85/ 91
4.19	Overall length	l ₁ (mm)	1847
4.20	Length to face of forks	l ₂ (mm)	697
4.21	Overall width	b ₁ / b ₂ (mm)	800
4.22	Fork dimensions	s/ e/ l (mm)	60/ 190/ 1150
4.25	Outside fork width, minimum/ maximum	b ₅ (mm)	560
4.32	Ground clearance, center of wheelbase	m ₂ (mm)	30
4.33	Aisle width, 1000×1200 pallet crossways	Ast (mm)	2400
4.34	Aisle width, 800×1200 pallet lengthways	Ast (mm)	2263
4.35	Outer turning radius	Wa (mm)	1423
Performance			
5.1	Travel speed, laden/ unladen	km/ h	5/ 5.5
5.2	Lifting speed, laden/ unladen	m/ s	0.1
5.3	Lowering speed, laden/ unladen	m/ s	—
5.8	Maximum gradeability, laden/ unladen S ₂ 5 min.	%	8/ 16
5.10	Service brake		Electromagnetic
Drive			
6.1	Drive motor rating S ₂ 60 min.	kW	1.1
6.2	Lift motor rating at S ₃ 15%	kW	2.2
6.4	Battery voltage/ rated capacity (5h)	V/ Ah	24/ 160
6.5	Battery weight (with box)	kg	120
	Battery compartment dimensions l/ w/ h	mm	—
	Battery type		—
Others			
8.1	Type of drive control		AC
	Manufacturer		ZAPI
8.4	Sound level at operator's ear	dB (A)	74

1. Special lifting height available
2. The specification in the table are for standard models only. For further information please contact us
3. Specification are subject to change without notice

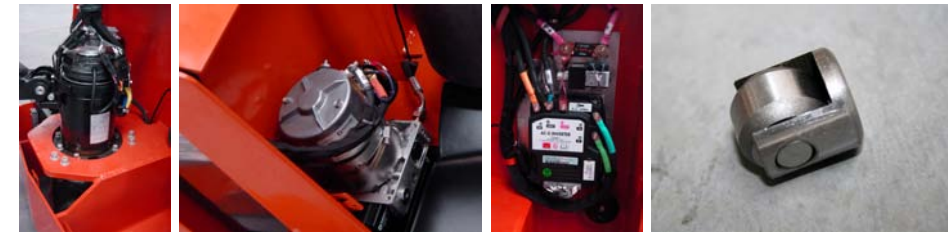


AC Power | ES10-22WA/ES12-25WA
Straddle Electric Stacker 1.0-1.2t

EP EQUIPMENT CO.,LTD.
www.ep-ep.com

Performance & Reliability

1. The innovative AC system offers quick response, accurate control, impact structure, excellent performance, longer battery service life.
2. World-class hydraulic power pack, with low noise, few vibration and excellent leak tightness, automatically adjusts the rate of decline whether loaded or unloaded, and ensures smooth lifting.
3. The latest AC controller, high reliability, with regenerated braking, anti-roll back and adjustable settings, ensures the best performance in the different states.
4. high-precision mast roller included side roller, ensures smoothly lifting.



Operability

1. The ergonomically designed handle ensures smooth and easy controls of all operation. All the operation of lifting and travelling, will be easily achieved by touching the button switches in the handle.
2. Fork and straddle is adjustable for a variety of operation.
3. Wider view mast ensures the operator better vision to reduce the risk of collision.



Serviceability

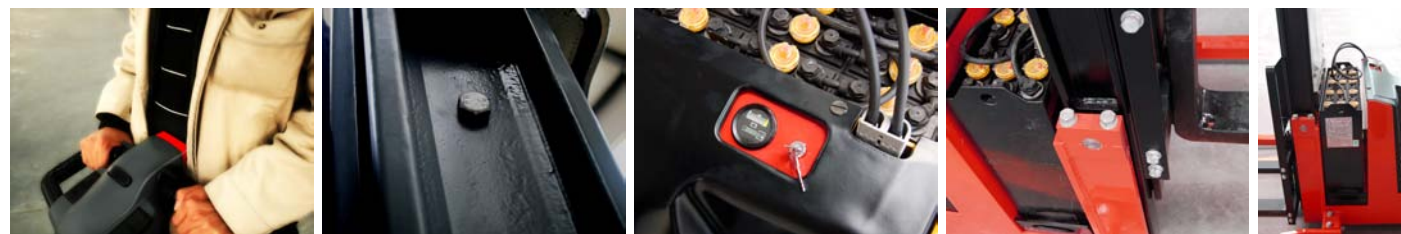
1. Vertical motor ensures convenience inspection and maintenance of motor and brake, provide much better maintainability than horizontal motor.
2. Self-Diagnostics provided through the digital display allow easy trouble-shooting with the use of an external handset.
3. Open design of battery box, makes rooms for larger capacity battery.





Safety

1. Explosion-proof valve installed under lifting cylinder, prevent the mast go down quickly if the oil pipe broken.
2. Anti-roll back available as standard to prevent uncontrolled traveled travel speed or roll-back on ramps when loading and unloading.
3. Emergency plug mounted at up-right side on truck frame, all power can be cut off by simply pulling emergency plug and the truck stops immediately.
4. The truck switches to low speed mode automatically when lifting higher than 0.5m, more secure.
5. Sideway battery design, easy for replacement.



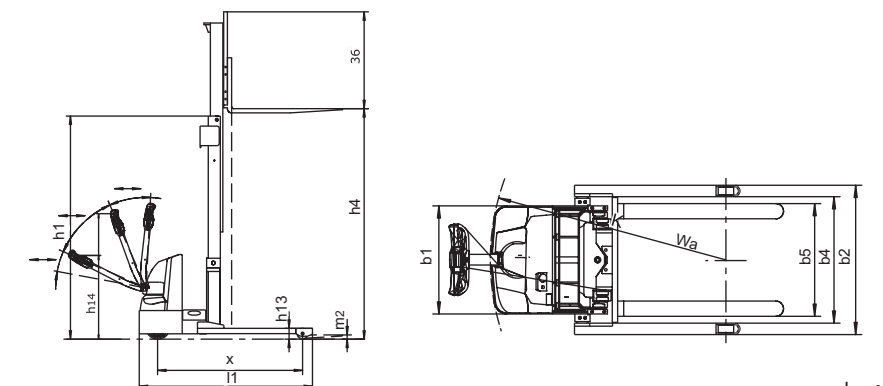
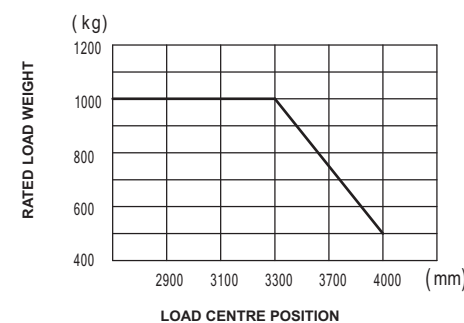
ES10-22WA/12-25WA		
	Standard Features	Option
1	Emergency stop & Belly Button	1 Load backrest
2	BDI and Hourmeter	2 Cold storage harness
3	Horn & Electrical Brake	3 Load wheel dual / single
4	Casters to balance stability	4 Fork width and length option (size)
5	Grease fitting	5 Charger
6	Industrial battery	7 Maintenance free battery
7	Battery cable and plug	8 Heavy-duty industry battery
8	Progressive speed AC control system	9 Customized battery compartment
9	Creep option (as standard)	11 Special colour
10	Ergonomics handle	
11	Sideway battery change	
12	Vertical-lifting battery change (as standard)	

Straddle Electric Stacker 1.0-1.2t

Characteristics			
1.1	Manufacturer		EP
1.2	Model designation		ES10-22WA
1.3	Drive unit		Battery
1.4	Operator type		Walkie
1.5	Load capacity	Q (kg)	910
1.6	Load center	c (mm)	600
1.9	Wheelbase	y (mm)	1374
Weights			
2.1	Service weight (Incl. battery)	kg	800
Wheels, Chassis			
3.1	Tyre type		PU/ PU
3.2	Tyre size, operator side (diameter × width)	mm	Φ230× 75
3.3	Tyre size, load side (diameter × width)	mm	Φ102× 50
3.5	Wheels, number operator/load side (x=drive wheels)		1x/ 2
3.7	Tread, load side	b ₁₁ (mm)	1045/ 1345
Dimensions			
4.2	Height, mast lowered	h ₁ (mm)	2110
4.3	Free lift	h ₂ (mm)	150
4.4	Lift height	h ₃ (mm)	3300
4.5	Height, mast extended	h ₄ (mm)	4196
4.9	Height of tiller arm in operating position, min/ max	h ₁₄ (mm)	825/ 1190
4.10	Height of straddle arms or load wheel casing	h ₈ (mm)	100
4.15	Fork height, lowered	h ₁₃ (mm)	75
4.19	Overall length	l ₁ (mm)	1948
4.20	Length to face of forks	l ₂ (mm)	877
4.21	Overall width	b ₁ / b ₂ (mm)	1120/ 1420
4.22	Fork dimensions	s/ e/ l (mm)	40/ 100/ 1067
4.24	Fork carriage width	b ₃ (mm)	820
4.25	Outside fork width, minimum/ maximum	b ₅ (mm)	254/ 780
4.26	Width between straddle arms	b ₄ (mm)	970/ 1270
4.32	Ground clearance, center of wheelbase	m ₂ (mm)	50
4.33	Aisle width, 1000×1200 pallet crossways	A _{st} (mm)	2157
4.34	Aisle width, 800×1200 pallet lengthways	A _{st} (mm)	2197
4.35	Outer turning radius	Wa (mm)	1545
Performance			
5.1	Travel speed, laden/ unladen	km/ h	5.5/ 6.0
5.2	Lifting speed, laden/ unladen	m/ s	0.127/ 0.23
5.3	Lowering speed, laden/ unladen	m/ s	0.26/ 0.20
5.8	Maximum gradeability, laden/ unladen S ₂ 5 min.	%	8/ 16
5.10	Service brake		Electromagnetic
Drive			
6.1	Drive motor rating S ₂ 60 min.	kW	1.1
6.2	Lift motor rating at S ₃ 15%	kW	2.2
6.4	Battery voltage/ rated capacity (5h)	V/ Ah	24/ 210
6.5	Battery weight (with box)	kg	190
	Battery compartment dimensions l/ w/ h	mm	—
	Battery type		—
Others			
8.1	Type of drive control		AC
	Manufacturer		ZAPI
8.4	Sound level at operator's ear	dB (A)	74

1. Special lifting height available
2. The specification in the table are for standard models only. For further information please contact us
3. Specification are subject to change without notice

RATED CAPACITIES AND LOAD CENTRES GRAPH





Let's grow together



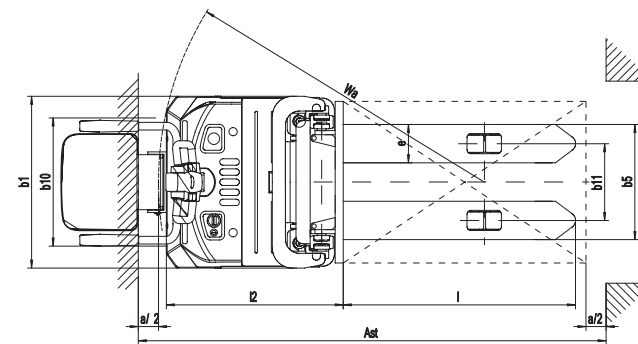
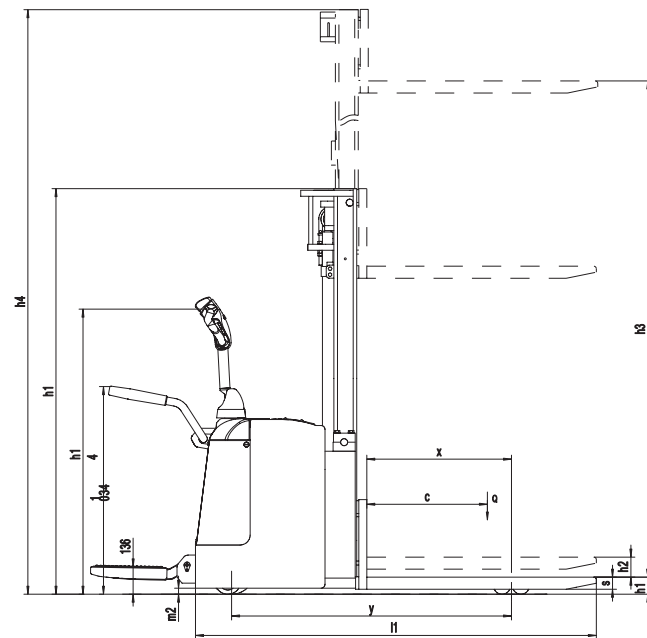
ES14-14RA/ES16-16RA
Stand-on Electric Stacker 1.4-1.6t

EP EQUIPMENT CO.,LTD.
www.ep-ep.com

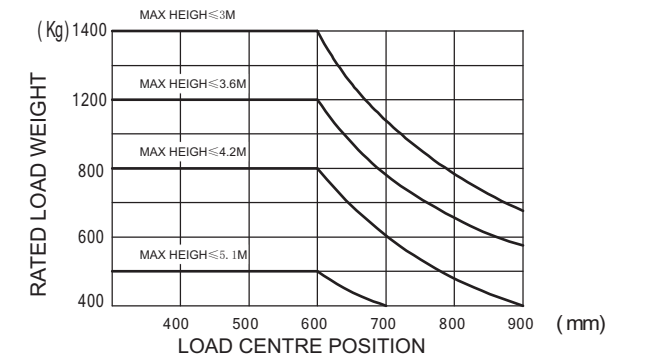


Features

1. The innovative AC system offers quick response, accurate control, impact structure, excellent performance, longer battery service life.
2. World-class hydraulic power pack, with low noise, few vibration and excellent leak tightness, automatically adjusts the rate of decline whether loaded or unloaded, and ensures smooth lifting.
3. The latest AC controller, high reliability, with regenerated braking, anti-roll back and adjustable settings, ensures the best performance in the different states.
4. American AMP connectors with top quality, prevents moisture and contaminants from interrupting truck operation in all environments, plus all the wires and cables reliably protected and fixed, greatly reduces the electrical error.
5. Creep speed control enabled when tiller /handle in vertical position allows the operator to work more efficient in a confined space.
6. Emergency plug mounted at up-right side on truck frame, all power can be cut off by simply pulling emergency plug and the truck stops immediately.
7. Lift limit switch which mounted on top of mast, stops the hydraulic motor at maximum lift height to reduce unnecessary strain on the lift components and preserve battery life.
8. The truck switches to low speed mode automatically when lifting higher than 0.5m, more secure.
9. Anti-roll back available as standard to prevent uncontrolled traveled travel speed or roll-back on ramps when loading and unloading.
10. Foldable side guards enhance operator's safety.
11. Wider view mast ensures the operator better vision to reduce the risk of collision.



RATED CAPACITIES AND LOAD CENTRES GRAPH



Stand-on Electric Stacker 1.4-1.6t Specification

Characteristics			
1.1	Manufacturer		EP
1.2	Model designation		ES14-14RA ES16-16RA
1.3	Drive unit		Battery Battery
1.4	Operator type		Rider stand Rider stand
1.5	Load capacity	Q (kg)	1400 1600
1.6	Load center	c (mm)	600 600
1.8	Load distance	x (mm)	713 713
1.9	Wheelbase	y (mm)	1394 1394
Weights			
2.1	Service weight (Incl. battery)	kg	1330 1400
2.2	Axle loading, laden operator/load side	kg	800/ 1930 940/ 2060
2.3	Axle loading, unladen operator/load side	kg	850/ 480 890/ 510
Wheels, Chassis			
3.1	Tyre type		PU/ PU PU/ PU
3.2	Tyre size, operator side (diameter × width)	mm	Φ230x75 Φ230x75
3.3	Tyre size, load side (diameter × width)	mm	Φ85x70 Φ85x70
3.4	Balance wheels (dimensions)		Φ130x60 Φ130x60
3.5	Wheels, number operator/load side (x=drive wheels)		1x+ 2/ 4 1x+ 2/ 4
3.6	Tread, operator side	b ₁₀ (mm)	634 634
3.7	Tread, load side	b ₁₁ (mm)	380 380
Dimensions			
4.2	Height, mast lowered	h ₁ (mm)	2019 2019
4.3	Free lift	h ₂ (mm)	100 100
4.4	Lift height	h ₃ (mm)	3000 3000
4.5	Height, mast extended	h ₄ (mm)	3529 3529
4.9	Height of tiller arm in operating position, min/ max	h ₁₄ (mm)	1007/ 1412 1007/ 1412
4.15	Fork height, lowered	h ₁₃ (mm)	85 85
4.19	Overall length	l ₁ (mm)	2003/ 2525 2003/ 2525
4.20	Length to face of forks	l ₂ (mm)	860 860
4.21	Overall width	b ₁ / b ₂ (mm)	850 850
4.22	Fork dimensions	s/ e/ l (mm)	60/ 190/ 1150 60/ 190/ 1150
4.25	Outside fork width, minimum/ maximum	b ₅ (mm)	570 570
4.32	Ground clearance	m ₂ (mm)	30 30
4.33	Aisle width, 1000×1200 pallet crossways	Ast (mm)	2521 2521
4.34	Aisle width, 800×1200 pallet lengthways	Ast (mm)	2454 2454
4.35	Outer turning radius	Wa (mm)	1613 1613
Performance			
5.1	Travel speed, laden/ unladen	km/ h	7.5/ 8.5 7.5/ 8.5
5.2	Lifting speed, laden/ unladen	m/ s	0.15/ 0.18 0.15/ 0.18
5.3	Lowering speed, laden/ unladen	m/ s	0.20/ 0.15 0.20/ 0.15
5.8	Maximum gradeability, laden/ unladen S ₂ 5 min.	%	8/ 16 8/ 16
5.10	Service brake		Electromagnetic Electromagnetic
Drive			
6.1	Drive motor rating S ₂ 60 min.	kW	1.5 1.5
6.2	Lift motor rating at S ₃ 15%	kW	3 3
6.4	Battery voltage/ rated capacity (5h)	V/ Ah	24/ 300 24/ 360
6.5	Battery weight (with box)	kg	280 350
	Battery compartment dimensions l/ w/ h	mm	815/ 222/ 630 815/ 222/ 630
	Battery type		Industry battery Industry battery
Others			
8.1	Type of drive control		AC AC
	Manufacturer		CURTIS CURTIS
8.4	Sound level at operator's ear	dB (A)	74 74

1. Special lifting height available
2. The specification in the table are for standard models only. For further information please contact us
3. Specification are subject to change without notice



ES-12-12EX
Forkover Electric Stacker 1.2t



Let's grow together

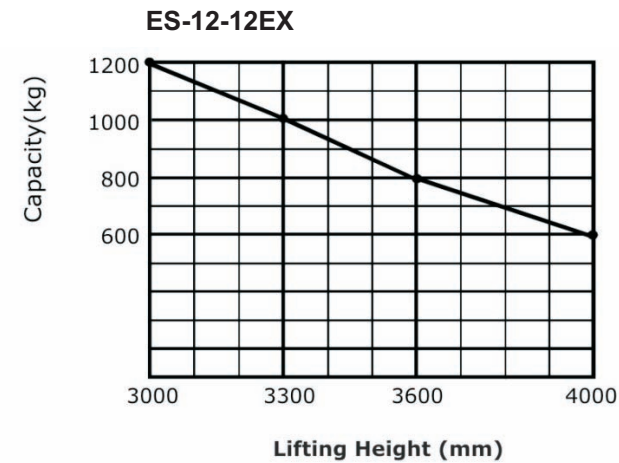
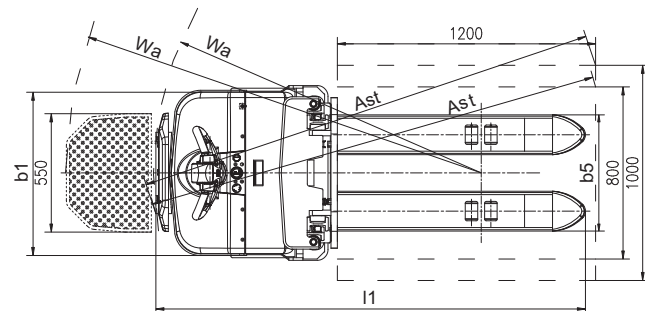
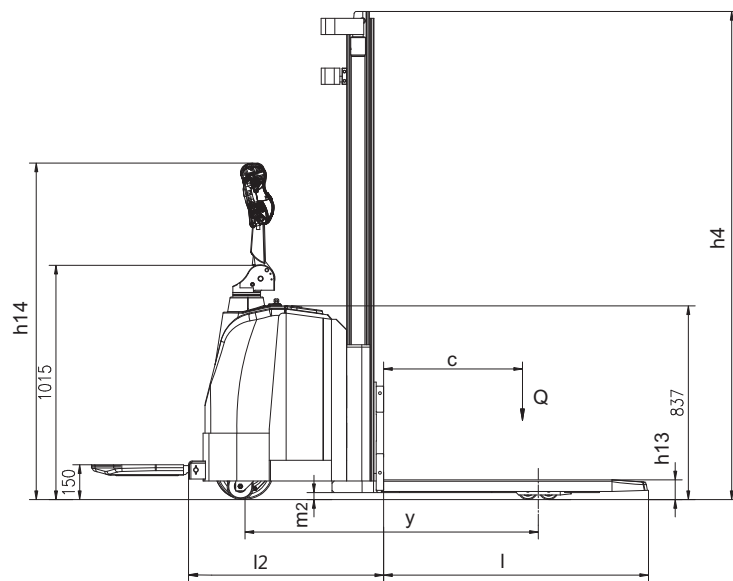


EP EQUIPMENT CO.,LTD.
www.ep-eq.com



Features

1. The innovative AC system offers quick response, accurate control, impact structure, excellent performance, longer battery service life.
2. The innovative AC motor provides stronger power to keep high speed with full load. 8% gradeability, provides increased power to climb docks and floor joints without lurching or stalling.
3. The latest AC controller, high reliability, with regenerated braking, anti-roll back and adjustable settings, ensures the best performance in the different states.
4. New tiller/handle head design for maximum operation comfort, and control lift/lower/horn buttons positioned to allow operator with either hand.
5. Easy-Touch emergency plug mounted at up-right side on truck frame help operator take immediate action for any emergent happens.
6. Self-Diagnostics provided through the digital display allow easy trouble-shooting with the use of an external handset.
7. Hourmeter and BDI (Battery Discharge Indicator) enable the operator to timely recharge.
8. Electric power steering system: Easy to operate, especially excellent performance on turning.
9. Wider view mast ensures the operator better vision to reduce the risk of collision.
10. Anti-roll back available as standard to prevent uncontrolled traveled travel speed or roll-back on ramps when loading and unloading.



Forkover Electric Stacker 1.2t Specification

Characteristics			
1.1	Manufacturer	EP	
1.2	Model designation	ES-12-12EX	
1.3	Drive unit	Battery	
1.4	Operator type	Walkie (platform option)	
1.5	Load capacity	Q (kg)	1200
1.6	Load center	c (mm)	600
1.9	Wheelbase	y (mm)	1270
Wheels, Chassis			
3.1	Tyre type		PU/PU
3.2	Tyre size, operator side (diameter × width)	mm	Φ248X75
3.3	Tyre size, load side (diameter × width)	mm	Φ84X70
3.4	Balance wheels (dimensions)	mm	Φ115X55
3.5	Wheels, number operator/load side (x=drive wheels)		1x+ 2/ 4
Dimensions			
4.2	Height, mast lowered	h ₁ (mm)	1980/ 2135/ 2335
4.4	Lift height	h ₃ (mm)	3000/ 3300/ 3600
4.5	Height, mast extended	h ₄ (mm)	3500/ 3800/ 4100
4.9	Height of tiller arm in operating position, min/ max	h ₁₄ (mm)	1015/ 1450
4.10	Height of straddle arms or load wheel casing	h ₈ (mm)	80
4.15	Fork height, lowered	h ₁₃ (mm)	85
4.19	Overall length	l ₁ (mm)	1875
4.20	Length to face of forks	l ₂ (mm)	843
4.21	Overall width	b ₁ / b ₂ (mm)	720
4.22	Fork dimensions	s/ e/ l (mm)	55/185/1150 or 1200
4.24	Fork carriage width	b ₃ (mm)	700
4.25	Outside fork width, minimum/ maximum	b ₅ (mm)	550/ 600/ 650
4.26	Width between straddle arms	b ₄ (mm)	265/ 315/ 365
4.31	Ground clearance, laden, below mast	m ₁ (mm)	30
4.32	Ground clearance, center of wheelbase	m ₂ (mm)	30
4.33	Aisle width, 1000×1200 pallet crossways	Ast (mm)	2160
4.34	Aisle width, 800×1200 pallet lengthways	Ast (mm)	2130
4.35	Outer turning radius	Wa (mm)	1935/ 1525
Performance			
5.1	Travel speed, laden/ unladen	km/ h	3-5 / 3-5
5.2	Lifting speed, laden/ unladen	m/ s	0.13 / 0.23
5.3	Lowering speed, laden/ unladen	m/ s	0.13 / 0.23
5.8	Maximum gradeability, laden/ unladen S ₂ 5 min.	%	5/ 7
5.10	Service brake		Electromagnetic
Drive			
6.1	Drive motor rating S ₂ 60 min.	kW	1.5
6.2	Lift motor rating at S ₃ 15%	kW	3
6.4	Battery voltage/ rated capacity (5h)	V/ Ah	24 /210
6.5	Battery weight (with box)	kg	200
	Battery compartment dimensions l/ w/ h	mm	650/ 200/ 575
	Battery type		Industry
Others			
8.1	Type of drive control		AC
	Manufacturer		CURTIS
8.4	Sound level at operator's ear	dB (A)	70
8.6	Steering		Power steering

1. Special lifting height available
2. The specification in the table are for standard models only. For further information please contact us
3. Specification are subject to change without notice



Let's grow together



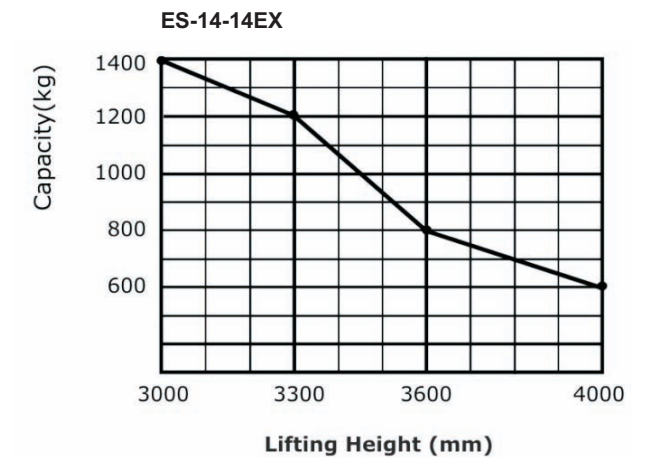
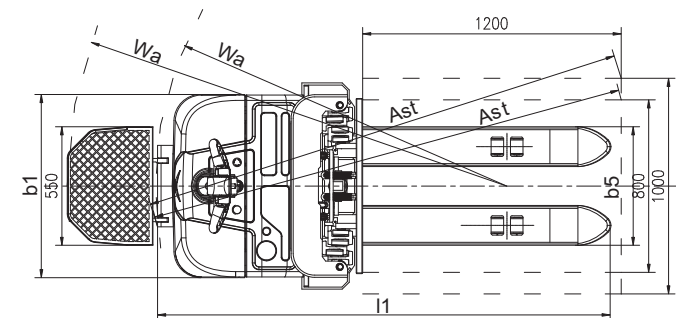
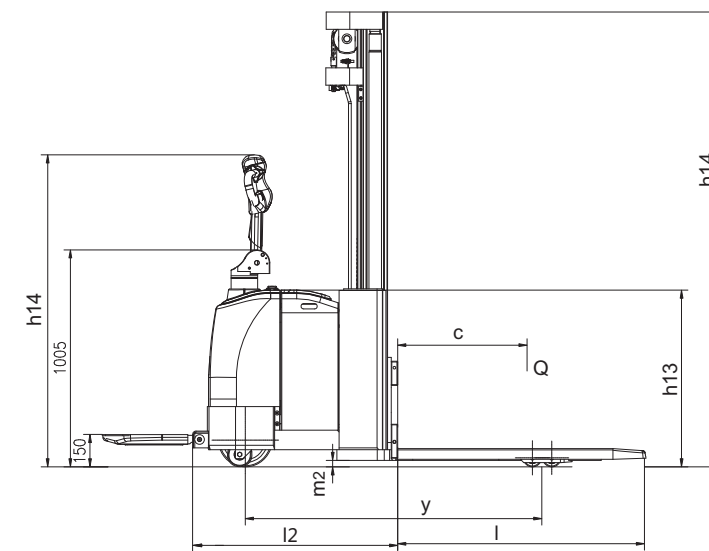
ES-14-14EX/ES-16-16EX/ES-16-16ETX
Forkover Electric Stacker 1.4-1.6t

EP EQUIPMENT CO.,LTD.
www.ep-ep.com



Features

1. The innovative AC system offers quick response, accurate control, impact structure, excellent performance, longer battery service life.
2. Advanced regenerative braking, guarantee low-energy consumption, increasing the efficiency.
3. High-accuracy mast roller and side inner roller, ensures smoothly lifting.
4. Multi-functional ergonomic control handle ensures smooth and easy controls of all operation. All the operation of lifting and travelling, will be easily achieved by touching the button switches in the handle.
5. Wider view mast ensures the operator better vision to reduce the risk of collision.
6. Easy-Touch emergency plug mounted at up-right side on truck frame help operator take immediate action for any emergent happens.
7. One-piece lightweight service access top cover conveniently bolt on and off for easy access to all major and key components, reducing service time when inspection.
8. Vertical motor ensures convenience inspection and maintenance of motor and brake, provide much better maintainability than horizontal motor.
9. AC Drive Motor, brushless, high reliability and performance, drastically reduced maintenance time and labor.
10. Electric power steering system: Easy to operate, especially excellent performance on turning.
11. Anti-roll back available as standard to prevent uncontrolled traveled travel speed or roll-back on ramps when loading and unloading.



Forkover Electric Stacker 1.4-1.6t Specification

Characteristics					
1.1	Manufacturer		EP	EP	EP
1.2	Model designation		ES-14-14EX	ES-16-16EX	ES-16-16ETX
1.3	Drive unit		Battery	Battery	Battery
1.4	Operator type		Walkie (platform option)	Walkie (platform option)	Walkie (platform option)
1.5	Load capacity	Q (kg)	1400	1600	1600
1.6	Load center	c (mm)	600	600	600
1.9	Wheelbase	y (mm)	1307	1307	1375
Wheels, Chassis					
3.1	Tyre type		PU/PU	PU/PU	PU/PU
3.2	Tyre size, operator side (diameter × width)	mm	Φ248X75	Φ248X75	Φ248X75
3.3	Tyre size, load side (diameter × width)	mm	Φ84X70	Φ84X70	Φ84X70
3.4	Balance wheels (dimensions)	mm	Φ115X55	Φ115X55	Φ115X55
3.5	Wheels, number operator/load side (x=drive wheels)		1x+ 2/ 4	1x+ 2/ 4	1x+ 2/ 4
Dimensions					
4.2	Height, mast lowered	h ₁ (mm)	1980/ 2135/ 2335/ 2500	1980/ 2135/ 2335/ 2500	2135
4.3	Free lift	h ₂ (mm)	—	—	1600
4.4	Lift height	h ₃ (mm)	3000/ 3300/ 3600/ 4000	3000/ 3300/ 3600/ 4000	4000/ 4500/ 5000
4.5	Height, mast extended	h ₄ (mm)	3500/ 3800/ 4100/ 4400	3500/ 3800/ 4100/ 4400	4500/ 5000/ 5500
4.9	Height of tiller arm in operating position, min/ max	h ₁₄ (mm)	1015/ 1430	1015/ 1430	1005/ 1450
4.10	Height of straddle arms or load wheel casing	h ₈ (mm)	80	80	80
4.15	Fork height, lowered	h ₁₃ (mm)	85	85	85
4.19	Overall length	l ₁ (mm)	2050	2050	2105
4.20	Length to face of forks	l ₂ (mm)	900	900	1140
4.21	Overall width	b ₁ / b ₂ (mm)	850	850	957
4.22	Fork dimensions	s/ e/ l (mm)	55/185/1150 or 1200	55/185/1150 or 1200	55/185/1150 or 1200
4.24	Fork carriage width	b ₃ (mm)	700	700	953
4.25	Outside fork width, minimum/ maximum	b ₅ (mm)	550/ 600/ 650	550/ 600/ 650	550/ 600/ 650
4.26	Width between straddle arms	b ₄ (mm)	265/ 315/ 365	265/ 315/ 365	265/ 315/ 365
4.31	Ground clearance, laden, below mast	m ₁ (mm)	30	30	30
4.32	Ground clearance, center of wheelbase	m ₂ (mm)	30	30	30
4.33	Aisle width, 1000×1200 pallet crossways	Ast (mm)	2210	2210	2260
4.34	Aisle width, 800×1200 pallet lengthways	Ast (mm)	2180	2180	2230
4.35	Outer turning radius	Wa (mm)	1990/ 1580	1990/ 1580	2040/ 1630
Performance					
5.1	Travel speed, laden/ unladen	km/ h	3-5 / 3-5	3-5 / 3-5	3-5 / 3-5
5.2	Lifting speed, laden/ unladen	m/ s	0.13 / 0.23	0.13 / 0.23	0.13 / 0.23
5.3	Lowering speed, laden/ unladen	m/ s	0.13 / 0.23	0.13 / 0.23	0.13 / 0.23
5.8	Maximum gradeability, laden/ unladen S ₂ 5 min.	%	5 / 7	5 / 7	5 / 7
5.10	Service brake		Electromagnetic	Electromagnetic	Electromagnetic
Drive					
6.1	Drive motor rating S ₂ 60 min.	kW	1.5	1.5	1.5
6.2	Lift motor rating at S ₃ 15%	kW	3	3	3
6.4	Battery voltage/ rated capacity (5h)	V/ Ah	24 / 280	24 / 280	24 / 280
6.5	Battery weight (with box)	kg	228	228	228
	Battery compartment dimensions l/ w/ h	mm	650x248x550	650x248x550	650x248x550
	Battery type		Industry	Industry	Industry
Others					
8.1	Type of drive control		AC	AC	AC
	Manufacturer		CURTIS	CURTIS	CURTIS
8.4	Sound level at operator's ear	dB (A)	70	70	70
8.6	Steering		Power steering	Power steering	Power steering

1. Special lifting height available

2. The specification in the table are for standard models only. For further information please contact us

3. Specification are subject to change without notice



ES-10-10CX
Counterbalance Electric Stacker 1.0t

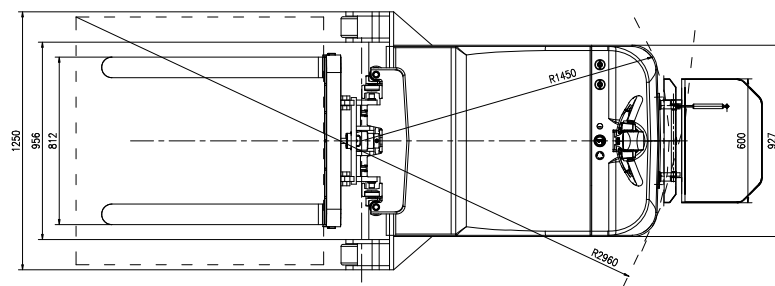
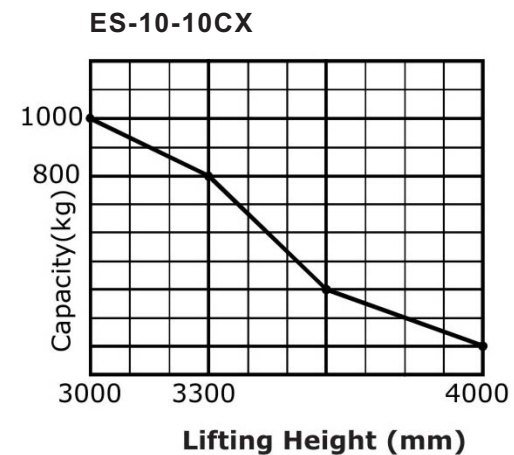
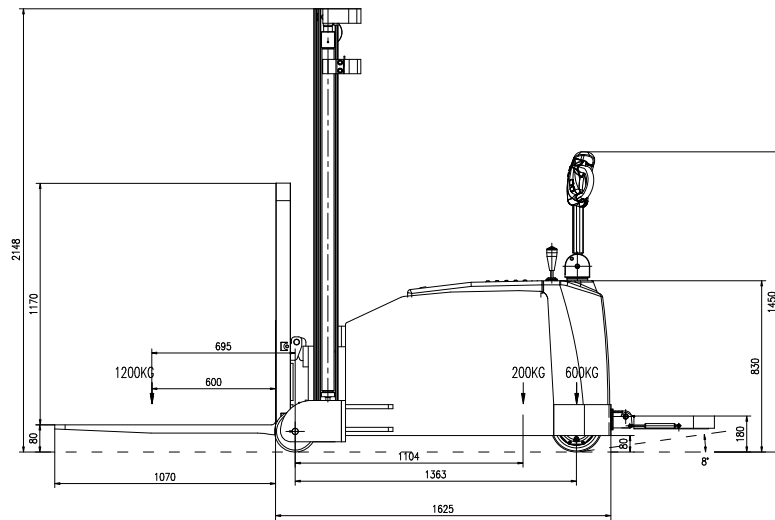
EP EQUIPMENT CO.,LTD.

www.ep-ep.com



Features

1. The innovative AC system offers quick response, accurate control, impact structure, excellent performance, longer battery service life.
2. Advanced regenerative braking, guarantee low-energy consumption, increasing the efficiency.
3. High-accuracy mast roller and side inner roller, ensures smoothly lifting.
4. Ergonomically designed handle ensures smooth and easy controls of all operation. All the operation of lifting and travelling, will be easily achieved by touching the button switches in the handle.
5. Creep speed control enabled when tiller/handle in vertical position allows the operator to work more efficient in a confined space.
6. Anti-roll back available as standard to prevent uncontrolled traveled travel speed or roll-back on ramps when loading and unloading.
7. Easy-Touch emergency plug mounted at up-right side on truck frame help operator take immediate action for any emergent happens.
8. Electric power steering system: Easy to operate, especially excellent performance on turning.
9. This is counter-balanced electric pallet stacker, very convenient to handling pallets.



Counterbalanced Electric Stacker 1.0t Specification

Characteristics			
1.1	Manufacturer	EP	
1.2	Model designation	ES-10-10CX	
1.3	Drive unit	Battery	
1.4	Operator type	Walkie	
1.5	Load capacity	Q (kg)	1000
1.6	Load center	c (mm)	500
1.9	Wheelbase	y (mm)	1280
Weights			
2.1	Service weight	kg	1600
Wheels, Chassis			
3.1	Tyre type		PU/PU
3.2	Tyre size, front (diameter × width)	mm	Φ248X75
3.3	Tyre size, rear (diameter × width)	mm	Φ160X73
3.5	Wheels, number front/ rear (x=drive wheels)		1x/ 2
Dimensions			
4.1	Mast/ fork carriage tilt, forward/ backward	α/ β (°)	3/ 6
4.2	Height, mast lowered	h_1 (mm)	2015
4.4	Lift height	h_3 (mm)	3000
4.5	Height, mast extended	h_4 (mm)	3850
4.9	Height of tiller arm in operating position, min/ max	h_{14} (mm)	1450, 1310(+140)
4.1	Fork height, lowered	h_{13} (mm)	55
4.2	Overall length	l_1 (mm)	2695
4.2	Overall width	b_1/ b_2 (mm)	1250
4.2	Fork dimensions	$s/ e/ l$ (mm)	40/100/1070
4.2	Fork carriage width	b_3 (mm)	812
4.2	Outside fork width, minimum/ maximum	b_5 (mm)	200/ 812
4.3	Ground clearance, laden, below mast	m_1 (mm)	50
4.3	Ground clearance, center of wheelbase	m_2 (mm)	80
4.3	Aisle width, 1000×1200 pallet crossways	A_{st} (mm)	2960
4.3	Aisle width, 800×1200 pallet lengthways	A_{st} (mm)	2955
4.3	Outer turning radius	W_a (mm)	1450
Performance			
5.1	Travel speed, laden/ unladen	km/ h	3 / 5
5.2	Lifting speed, laden/ unladen	m/ s	0.13 / 0.23
5.3	Lowering speed, laden/ unladen	m/ s	0.13 / 0.23
5.8	Maximum gradeability, laden/ unladen S2 5 min.	%	5 / 7
5.1	Service brake		Electromagnetic
Drive			
6.1	Drive motor rating S2 60 min.	kW	1.5
6.2	Lift motor rating at S3 15%	kW	3
6.4	Battery voltage/ rated capacity (5h)	V/ Ah	24 /270
6.5	Battery weight (with box)	kg	235
	Battery dimensions l/ w/ h	mm	790x210x590
	Battery model		Industry battery
Others			
8.1	Type of drive control		AC
	Manufacturer		CURTIS
8.4	Sound level at operator's ear	dB (A)	70
8.5	Steering		Power steering

1. Special lifting height available
2. The specification in the table are for standard models only. For further information please contact us
3. Specification are subject to change without notice